

Daintree Experiences

The definitive guide to the Daintree.
What to Do. Where to Stay. Where to Eat.



Activity

Birdwatching

Mountain Biking

Trail Bike Tours

Farm Tours

Rainforest River SUP

Walking Tours

Fishing

Rainforest Canopy
Tours

Wildlife

Great Barrier Reef

River Cruises

Yoga, Meditation &
Wellness

Guided Coach
Tours

River Drifting

4WD Tours

Horse Riding

Spas and Massages

Indigenous
Experiences

Swimming Spots

Eat / Stay / Drive

Restaurants

Accommodation

Ferry & Driving
Distances

Wedding Venues &
Corporate Events

Community
Facilities

Grocery Stores &
Markets

Information missing or wrong? Please call Gaye 0418 793 009 gaye@dgate-scott.com

↑ Birdwatching Tours

Name/Link	Contact / Location	Description	Times / Bookings
Cooper Creek Wilderness	4098 9126 Info@coopercreek.com.au Cape Tribulation Road at Coopers Crossing	Cooper Creek is a paradise for birdwatchers, providing opportunities to spot a diverse range of avian species from vibrant kingfishers to majestic herons. 2 hour guided rainforest walk through cathedral-like amphitheatre of towering fan palms. 4 hour, 7.2 kilometre guided rainforest walk over uneven jungle terrain, water crossings, with expert sharing insight into ancient landscape.	2 hour - 10am & 2pm 4 hour - 8:30am & 1pm <i>Book Tour Here</i>
Daintree Boatman Wildlife Cruises	0417 651 929 boatman@daintreerivertours.com.au	Two hour cruises on the Daintree River at sunrise or sunset. Highly sought-after birds, crocodiles and snakes are seen on most cruises.	6:30am and 4pm <i>Book Here</i>
Daintree River Wild Watch	0447 546 926 info@daintreeriverwildwatch.com.au	Daintree River cruises offer the opportunity for some great bird-watching and photography. Species often found include the Great-Billed Heron, Black Bittern, Nankeen Night Heron, Papuan Frogmouth, Double-Eyed Fig Parrot, Wompoo Fruit-Dove, Shining Flycatcher, Large-billed Gerygone, Yellow-bellied Sunbird & many more – too many to mention.	6:30am and 4pm Call 0447 546 926 to book



↑ Farm Tours

Company	Contact / Location	Description	Times / Bookings
Bloomfield Vanilla	0427 608 223 bloomfieldvanilla@gmail.com 254 Banabilla Road, Degarra	Owner Nick shares the farm's history and significance of vanilla as guests stroll through the picturesque orchard lined with climbing vanilla vines. Learn about the delicate nature of the Vanilla Orchids, the intricate art of hand pollination and the long, slow process of the vanilla curing to unlock the unique flavour of the Bloomfield River Vanilla Beans. Offers an insight into one of the world's most labour-intensive crops and a glimpse into an extraordinary unique lifestyle to be lived in this remote part of Queensland.	Bookings essential No set times – all tours on request.
Cape Trib Farm	4098 0042 3939 Cape Tribulation Road, Cape Tribulation info@capetribfarm.com.au	This 1 ½ hour Fruit Tasting tour, which includes tasting 10 different fruits and a walk around the orchard, is a must for foodies and fruit-lovers everywhere. With over 80 varieties of fruit grown on the farm, there is always something new and exotic to try.	Mon, Wed, Fri, Sat at 2pm. Late March/Easter through to end October. <i>Bookings Essential - Book Here</i>
Daintree Saltwater Barramundi	Cnr Mossman Daintree Rd & Vixies Rd, Wonga Beach 4098 7117 info@hookabarra.com.au	<ul style="list-style-type: none"> ▪ 1 hour tour ▪ Feed juvenile barramundi ▪ Watch farm hand harvest fish to order ▪ Gourmet platter of fresh barra produce 	Three tours daily 9am; 10:30am & 12pm <i>Book Here</i>
Daintree Sensations	4098 7117 info@daintreesensations.com.au	<ul style="list-style-type: none"> ▪ Full day tour ▪ Itinerary includes iconic farms and award-winning food producers ▪ Chocolate; exotic tropical fruits, gourmet platter Daintree saltwater barramundi. ▪ Swim at Cassowary Falls and enjoy a cocktail and nibbles. 	Wednesday To Saturday 9am to 5pm <i>Book Here</i>

↑ Farm Tours

Company	Contact / Location	Description	Times / Bookings
Daintree Tea	4098 9139 Info@daintreetea.com.au Cape Tribulation Road, Diwan 250 metres north of Daintree Siesta	<ul style="list-style-type: none"> Travellers are encouraged to stop at the farm's roadside stall where you can purchase some delicious Daintree Tea and Daintree Honey. The stall is unmanned. Cash payments can be made in honesty box or online payments for purchases can be made via the website. 	Open Daily – Daylight hours.

↑ Fishing Tours

Name/Link	Contact / Location	Description	Times / Bookings
Hook'd on the Daintree	0427 665 161 hookdonthedaintree@outlook.com Daintree Ferry Boat Ramp	<ul style="list-style-type: none"> 4, 6 and 8 hour fishing charter trips available River, estuary & coastal fishing BYO lunch and drinks Croc Spotting Tours 	8am to 12pm 8am to 3pm 8am to 5pm Other times on request
Daintree Fishing	0488 907 776 dave@daintreefishing.com.au	Half Day personalised tours, river, coastal and reef sportfishing. BYO lunch and Drinks	7am to 11am Daintree Ferry Boat Ramp
Hook A Barra	4098 7117 info@hookabarra.com.au 113 Vixies Road, Wonga Beach	<ul style="list-style-type: none"> Land based fishing, 4 hour tour Transfers to/from Port Douglas in the Barramobile Farm tour & Fish Feeding One hour fishing Lunch at the Hookabarra Kitchen 	7 days - open 9 to 5



Great Barrier Reef Tours

Name/Link	Contact / Location	Description	Times / Bookings
Ocean Safari	4098 0006 3903 Cape Tribulation Rd, Cape Tribulation tours@oceansafari.com.au	<ul style="list-style-type: none"> ▪ Half day reef snorkelling tours ▪ After a 25 minute exhilarating ride, you are ready to snorkel fabulous locations at Mackay Reef and Sandy Cay ▪ Swimming with turtles and snorkel the pristine untouched Great Barrier Reef off the Daintree Coast, visiting two different snorkel destinations. ▪ Departs Cape Trib – pick up from local accommodation available. 	8:00am & 12 noon
Windswell	0427 498 042 Pick up/drop off from the beach at: Cape Tribulation, Thornton or Cow Bay	<ul style="list-style-type: none"> ▪ Explore remote reefs, islands and sand cays on the Great Barrier Reef. ▪ Private charter for up to 15 people. ▪ You'll get to explore one of the idyllic islands of Low Isles, Snapper Island or Undine Coral Cay. Stand up paddle boarding, snorkelling in the morning, and a choice of wakeboarding or tubing in the afternoon. 	8am to 4pm Bookings essential by 4pm day prior to tour



Horse Riding

Company	Contact	Description	Times
Cape Tribulation Horse Rides	1800 111 124 gday@capetribhorserides.com.au 3812 Cape Tribulation Road, Cape Tribulation	<ul style="list-style-type: none"> ▪ Scenic ride of discovery. ▪ Enjoy a leisurely rainforest ramble through to Myall Beach and back again. ▪ Beginners welcome ▪ The rides cater to riders of all levels. ▪ Ages 10+ ▪ There is a weight limit of 95 kg for riders. 	Two Tours Daily 10:00am & 1:30pm



Indigenous Experiences - *Yalada*

Name	Contact	Description	Time
Bamanga Murruku Visitor Centre	(07) 4098 3552 tourism@jabalbina.com.au 3867 Cape Tribulation Road, Cape Tribulation	Discover a gateway to Eastern Kuku Yalanji Country where rainforest and reef come together through the world's oldest living culture. Operated by Yalada Tours, this community-owned hub invites you to experience Country through the voices of Traditional Owners—explore curated cultural displays, meet local artists, and browse authentic artworks and products directly supporting community and conservation. From here, step into immersive guided experiences across the Daintree Rainforest and Great Barrier Reef, gaining a deeper understanding of place, culture and connection. Bamanga Murruku—“Bama coming together”—is more than a visitor centre; it is a place to learn, connect and be part of a living cultural landscape.	
Daintree Dreaming	Downunder Tours 4047 9066 res@downundertours.com	<ul style="list-style-type: none"> ▪ Small group luxury coach tour ▪ Kubirri Warra leads an authentic coastal adventure across the beaches, mudflats, and mangroves of their ancestral fishing grounds. ▪ Walk trails at Mossman Gorge ▪ Lunch at Mayi Café at Mossman Gorge Cultural Centre ▪ Janbal Gallery immersive art experience 	9am to 4pm Monday Wednesday Friday Saturday
Mason's tours Private Guide	4098 0070 lawrence@masontours.com.au 3781 Cape Tribulation Rd, Cape Tribulation	<ul style="list-style-type: none"> ▪ Personalised tours of the Bloomfield Track and Cooktown area with Lawrence, a third generation resident. ▪ Indigenous walks and experiences with Elders Lawrence has known all his life can be included and tailored to suit any itinerary. 	Any day Any time



Indigenous Experiences - *Yalada*

Name	Contact	Description	Time
Yalada Tours	(07) 4098 3552 212 Mossman Gorge Rd, Mossman Gorge tourism@jabalbina.com.au	<p>Yalada Tours is a social enterprise owned by Eastern Kuku Yalanji people grounded in conservation and cultural respect for this truly ancient place and the oldest continuous culture in the world. Every guest contributes to rainforest restoration, conservation, and the continuation of Yalanji knowledge while going on the adventure of a lifetime to places no other tour can access.</p> <p>Walk alongside the Kuku-Yalanji people who have cared for this land for over 65,000 years, or more than 30,000 generations as they share the knowledge of their ancestors. Travel from one clan area to the next across the rich tapestry that is a living cultural landscape. Taste the fruits of the forest, find healing in the waters, and learn the ways of fire and song, of reef and river, of sky and stone.</p> <p>Travel deep into the forest, where waterfalls whisper their secrets, where ancient songlines thread through time. Snorkel the Great Barrier Reef, where the coral glows in hues of crimson and gold, where the sea holds the stories of the saltwater people.</p>	<p>Book Your Yalada Tour</p> <ul style="list-style-type: none"> ▪ 2 hour Dubudji Welcome Tour ▪ Education Tours ▪ Half Day Corporate
Walkabout Cultural Adventures	Juan Walker: juan@walkaboutadventures.com.au Mobile: 0429 478 206	<ul style="list-style-type: none"> ▪ Full or Half Day ▪ Ngana <i>Julaymba</i> Dungay meaning We all going to Daintree ▪ Tour explores south of the Daintree River including Mossman Gorge and provides cultural insights into the Eastern Kuku Yalanji Aboriginal people. ▪ Guided walk through the rainforest at Mossman Gorge and local coastal habitats, beaches and mangrove forests. ▪ Gain an insight into the Kuku Yalanji people; how they use the natural environment, learn about different foods & medicines, sample seasonal bush tucker, try Aboriginal hunting practices. ▪ Boomerang / spear throwing and if you are lucky, catch a mud crab. 	<p>Choose full or half day</p> <p>Full Day 8am to 4:30pm</p> <p>Morning: 8am to 1pm</p> <p>Afternoon 12:30pm to 4:30pm</p>



Indigenous Experiences - *Yalada*

Name	Contact	Description	Time
Walkabout Cultural Adventures	Juan Walker: juan@walkaboutadventures.com.au Mobile: 0429 478 206	<ul style="list-style-type: none"> ▪ Full Day Tour ▪ Ngana <i>Kulkinga</i> Dungay meaning “We all going to Cape Tribulation ▪ Tour crosses the Daintree River by cable car ferry and explores sights through to Cape Tribulation ▪ Provides cultural insights into the Eastern Kuku Yalanji Aboriginal people. 	8am to 4:30pm
Traditional owner CJ Fisher a Kuku Yalanji Elder and Buru Traditional Owner	CJ Fisher 4098 6248 or yindillicamp@gmail.com 4WD Access only: About an hour’s drive from Bloomfield on China Camp Road (approx. 26 kms) or 2 hour drive up the CREB Track from Daintree Village (approx. 38 kms)	<ul style="list-style-type: none"> ▪ CJ Fischer, a Kuku Yalanji Elder and Buru Traditional owner guides guests walk through pristine rainforest. ▪ Walk includes welcome smoke ceremony, stories & identification of bush tucker, damper & tea. ▪ Cultural Sites Walk: Full day experience which includes walk to culturally & spiritually significant site. Includes a welcome smoke ceremony, stories, face & body painting with traditional clays, bush tucker demonstrations and bathing in the healing waters of the pristine Meg River. ▪ Picnic lunch & refreshments incl. 	Bookings are essential Time confirmed on booking.



Mountain Bike Tours

Tour Name	Contact	Description
CREB Track	Bike n Hike 3 Warner St, Port Douglas 0477 774 443 bikenhike@live.com.au	<ul style="list-style-type: none"> ▪ Epic three days tours for extreme mountain bikers on the famous CREB Track, Roaring Meg Falls (Kija), welcome to country and cold beer at the Lion's Den Hotel. ▪ All catering, camping gear & transfers from Port Douglas supplied
Hidden Lagoons Mountain Bike Tour	Bike n Hike 3 Warner St, Port Douglas 0477 774 443 bikenhike@live.com.au	<ul style="list-style-type: none"> ▪ Perfect for kids from 7 yrs and any first-timers to mountain biking. ▪ From your accommodation we take a short drive up to Mt Molloy on the edge of the Great Dividing Range. ▪ An easy trail awaits you through natural forest where wild brumbies are often spotted. ▪ Swim in the lagoon makes for a welcome halfway stop while enjoying some snacks.



Rainforest River Stand Up Paddle Board (SUP) Magic

Tour Name	Company	Description	Times
Stand Up Paddle Boarding	Windswell windswellkitesurfing@gmail.com 0427 498 042	2 ½ to 3 hour guided stand up paddle boarding tour exploring the wet tropics rainforests.	Runs twice daily: 9am and 2pm.



Rainforest Canopy Tours

Company	Contact	Description	Times
Daintree Discovery Centre	Cow Bay 4098 9171 info@discoverthedaintree.com	Aerial Boardwalk – 11 metres off the ground and rated as one of the Top Ten Skywalks in the country By Australian Geographic. The 23 metre canopy tower allows unprecedented access to the rainforest. Five different viewing platforms give visitors of all ages access the various levels of the rainforest – from the forest floor to the uppermost reaches of the canopy. Entry includes 7 day re-entry pass.	Daily 9am – 5pm *last entry at 4pm 1 hour drive from Port Douglas
Treetops Adventure	Cape Tribulation 4003 9031 capetrib@treetopsadventure.com.au	Zip line through rainforest canopy for a bird’s eye view of the Daintree Rainforest – up to 15 metres above ground – 1 ½ to 2 hour Canopy Tour. 3922 Cape Tribulation Road, Cape Tribulation.	School & Public Holidays: 7 days 9am - 3pm Tues-Sun 10am - 3pm Check website for availability.



Rainforest – Plant a Tree or a few Trees

Daintree Life works with Douglas Shire Council and landowners to find key areas of land for suitable revegetation. The aim to promote positive outcomes for the Daintree ecosystem and the broader environment, expand the tourism experience, and help the local economy. Visitors are welcome to join community plantings. Contact Connie and Dave at admin@daintreelife.com.au if you are interested in getting involved

Daintree Life also offers a tree planting service for those looking to mark a special occasion. It may be a living birthday or wedding gift, or having trees planted in memoriam of loved ones. For all plantings, Daintree Life provides a personalised certificate, places a small marker on site, and if you are unable to be involved in the planting, will provides photos and GPS location. Details on Daintree Life’s website [Rainforest Revegetation | Daintree Life | Australia](#)

River Cruises - Cooper Creek & Daintree River

Company	Location	Contact	Description	Times
Bruce Belcher & Sons	2856 Mossman-Daintree Rd, Lower Daintree	0459 241 899 info@daintreerivercruises.com.au	Cruises operate throughout the day	Daily 9.30am to 4.00pm
Cape Tribulation Wilderness Cruises	Cape Tribulation Road, Thornton's Beach, Cooper Creek	0457 731 000 info@capetribcruises.com	<ul style="list-style-type: none"> ▪ Cruise on Cooper Creek ▪ Night cruises by arrangement 	3 trips Daily 10:30am; 11:30 and 2pm
Crocodile Express Greater Daintree Wildlife Cruises	Daintree Village & Daintree Ferry	4098 6120 info@crocodileexpress.com	One hour wildlife cruises operate throughout the day at each end of the Daintree River.	Daily at Ferry crossing 10am – 3.30pm Daily in Village 8:30am – 3:30pm
Daintree Boatman Wildlife Cruises	Daintree Village	0417 651 929 boatman@daintreerivertours.com.au	Dawn & Dusk – Birdwatching & Wildlife 2 hour tours Max. 10 guests	Apr-Aug 7am & 4pm Sep-Jan 6:30am & 4:30pm Closed Feb/Mar
Daintree Crocodile Tours	Daintree Village Public Jetty	0487 566 694	One hour river cruise leaving Daintree Village jetty. Max. 24 guests per cruise	Daily 8am to 5pm bookings essential
Daintree River Cruise Centre	Daintree River 3914 Mossman Daintree Road, Daintree	4098 6115 info@daintreerivercruisecentre.com.au	Advanced Eco Wildlife Cruises on the Daintree River. Departing from a private waterfront location with beautiful picnic areas and gardens.	Daily 9.30am – 4pm
Daintree River Wild Watch	Daintree Village Public Jetty	0447 546 926 info@daintreeriverwildwatch.com.au	Sunrise & sunset 2 hours 10 passengers only	Departure times: Sunrise 6:30am Sunset 4pm
Daintree Riverview Crocodile Tours	Daintree Village Public Jetty	0409 627 434 0413 929 133 info@Daintreeriverview.com	Join our expert local guide, Michael, for an unforgettable river cruise see crocodiles, birdlife, and the unique wildlife of the Daintree. Suitable for all ages and families	Tours depart daily.

↑ River Drift Experience

Company	Contact	Description	Times / Booking
River Drift Experience	4099 3677 sales@backcountrybliss.com.au	A guided rainforest river experience combining an interpretive river walk with a float downstream. Begin on foot beneath dense canopy, then transition onto river sleds to drift with the current, gliding through calm sections and feeling the rush of faster water as the rainforest surrounds you.	Departure times: 9am & 2pm. Pick up & drop off from accommodation.

↑ Spas & Massages

Company	Contact	Description	Times / Booking
Daintree Eco Lodge & Spa	4098 6100 reservations@daintree-ecolodge.com.au 3189 Mossman Daintree Road, Daintree Village	Massages, facials, full body treatments and Vichy shower Treatments range from 30 minutes to 2 ½ hours.	The Spa is open daily from 9am to 4pm. Bookings via online form. Spa menu and booking form here
Prema Shanti Yoga	4098 9006 info@premashanti.com.au	Massages, facials, Indian head massages, ear candling and detox packages. Personally tailored treatments, with a touch of Indian influence.	
Silky Oaks Lodge – Healing Waters Spa.	4098 1666 423 Finlayvale Road North Mossman	Facial Therapies; Body Elements; Body Rituals; Hydration Therapies, Signature Therapies; Spa Essentials and Yoga.	Open to the public offering a wide selection of treatments and extras. Spa Menu & Booking Form.



Tourist Information

Company	Address	Telephone	Times / Booking
Adventures Port Douglas	adventuresportdouglas@gmail.com	0427 498 042	24 Hours
Daintree Discovery Centre – Wet Tropics Visitor Info Centre	24 Tulip Oak Road, Cow Bay	4098 9171	Open daily 9am – 5pm
Daintree Rainforest Village	2094 Cape Tribulation Road, Diwan	0466 658 399	Open daily 7.00am – 6pm
Daintree Tourist Information Centre	5 Stewart Street, Daintree Village	4098 6120	Open daily 8.30am – 4pm
Friendly Grocer & Souvenir Store	3910 Cape Tribulation Road, Cape Tribulation	4098 0100	Open daily 9am – 5pm. Extended hours during peak season.
Mason's Store	3718 Cape Tribulation Road, Cape Tribulation	4098 0070	Open daily 10.00am – 5pm
Safari Lodge	3903 Cape Tribulation Road, Cape Tribulation	4098 0006	Open daily 8:00am-5.30pm
The Daintree Shop	2/32 Macrossan Street, Port Douglas	4099 5430	Open Daily 10:00am to 6:00pm.
Wildlife Habitat - Wet Tropics Information Centre	Corner Captain Cook Highway and Port Douglas Road, Port Douglas	4099 3235	Open daily 8.00am – 4pm (excluding Christmas Day)



Trail Bike Tours

Location	Contact	Description	Times
Cairns to Cape York DRZ400E	NQ Dirt Bike Tours 0408 654 430 tours@nqdirtbiketours.com.au	6 Day 5 Nights Epic Trail Bike Adventure Tour <ul style="list-style-type: none"> DRZ400e 1,400+ km off-road adventure from Cairns to the tip of Cape York Tracks include full Old Telegraph Track, Franchmans Track, Starcke track, CREB track and more. Camp on remote cattle stations exclusive to us along with exclusive trails Small crews of 8-15 riders 	Tours operate May to October 2026
Cairns to Cape York KTM 500 EXC-F	NQ Dirt Bike Tours 0408 654 430 tours@nqdirtbiketours.com.au	6 Day 5 Nights Epic Trail Bike Adventure Tour <ul style="list-style-type: none"> KTM500EXC-f 1,400+ km off-road adventure from Cairns to Cape York's tip Tracks include full Old Telegraph Track, Franchmans Track, Starcke track, CREB track and more. Camp on remote cattle stations exclusive to us along with exclusive trails Small crews of 8-15 riders 	Tours almost booked out. Bookings for 2027 open:
Elwood Motor Cycle Adventures Cairns to Cape York	Ellwood Motorcyle Adventures admin@ellwoodmotorcycleadventure s.com.au 0458 004 907	<ul style="list-style-type: none"> 6 days of riding, covering approximately 1500 kilometres; flying out on Day 7. Ride through Daintree Rainforest, CREB Track. Tour begins in Cairns, and concludes at Cape York, with a return flight to Cairns included. 90% off-road, including single track, 4WD track, station track, and main road. Advanced routes feature mud, rocks, river crossings, bull dust, single trails, and technical terrain. Must be comfortable riding at 80KM/ph on dirt roads & 100KM/ph on main roads. Tented camping each night, with the option to upgrade to additional amenities on 3 nights. All campsites have hot showers and toilet facilities. 	12 – 18 June 2026 7 – 13 Aug 2026 29 Oct – 4 Nov 2026 9 – 15 Jul 2027 9 – 15 Sep 2027 23 – 29 Sep 2027 7 – 13 Oct 2027 21 – 27 Oct 2027 Refer website for 2028.

Walking Tours

Tour	Contact Details	Description	Times
Family Friendly Night Walk	Jungle Escapes Adventures & Tours admin@jungleescapes.com.au 0407 734 702 141 Camelot Close, Cape Tribulation	Maximum 10 people interpretive walks along natural bush trails, deep in the forest are far from public access boardwalks. - No mosquito, leeches, deadly venomous animals - Natural bush trails, old growth Rainforest - Nocturnal spotlighting, Thermal imaging technology - Photography permitted	6.00pm - 7.15pm Bookings essential
Night Walk		Maximum 10 persons - Minimum age 10 - Nocturnal spotlighting - Pristine old growth Rainforest - Exclusive access on natural bush trails - Biological scientist guide with 27 years guiding experience in Daintree - Thermal imaging technology - No mosquito, leeches, deadly venomous animals - Photography permitted	7.30pm -9.30pm
Day Walk		2 hour walking tour on private natural bush trails through pristine old growth rainforest - Photography permitted - Insect repellent & binoculars provided - No deadly venomous animals	Two tours daily 8.30am and 1.30pm
Two-hour Night Walk	Crocodylus 0402 735 124 Daintree.crocodylus@gmail.com 161 Buchanan Creek Road, Cow Bay	The Night Discovery Walk is a two-hour guided expedition that departs directly from the Daintree Crocodylus basecamp nightly from 7:00 PM to 9:00 PM. This immersive experience is an excellent choice for families; it is kid-friendly (recommended for ages 5 and up) and offers a safe, engaging way for children to encounter the Daintree's native wildlife. From the forest floor to the canopy, participants of all ages can discover exactly what is glowing, gliding, and growing in the shadows of the world's oldest rainforest.	7pm to 9pm

Walking Tours

Tour	Contact Details	Description	Times
Daintree Rainforest Cooper Creek Wilderness	Daintree Rainforest – Cooper Creek Wilderness 0438 889 136 info@daintreerainforest.au 2333 Cape Tribulation Road, Diwan	<p>The 2-hour Grand Fan Palm Gallery Tour is a guided walking tour traversing into the very heart of the world’s oldest surviving rainforest. Expert inhabitant guides provide this irreplaceable treasure with its fascinating human understanding and appreciation. Evolutionary refinement has forged a living museum of rarity and specialisation, serving the greater interests of life over 180-million years. Only half-a-percent of the half-million visitors who cross the Daintree Ferry, make it into the Grand Fan Palm Gallery.</p> <p>The 4-hour Greater Wilderness Tour, provides discerning travellers with deeper and more enriching access into the centrepiece of the world’s oldest surviving rainforest, revealing tremendous insight into a remarkable landscape. This guided walking tour encompasses 7.2-KM over uneven jungle terrain and has water-crossings of variable depth (depending upon the intensity of local rainfall).</p>	Grand Fan Palm Gallery Tour 10am or 2pm Book here. Greater Wilderness Experience 8:30am Book here
Daintree Fan Palms	0413 935 955 1882 Cape Tribulation Road, Diwan	Self-guided tour. Purchase tickets at the shop and stroll along the board walk and be amazed at the awesome fan palms. 15 minutes round trip if in a hurry, otherwise allow half an hour to stay and bask under the canopy of the giant fan palms.	Mon – Thu 9am - 5pm Fri – 9am – 3pm Sat – Closed Sund – 10am to 3pm No booking required.
Daintree Rainforest Night Walk	Far North Escapes bookings@farnorthescapes.com 0468 967 703 www.farnorthescapes.com.au	With our experienced guide, walk into the night under the tree canopy of the world’s oldest rainforest. This is a great way to see the local flora and fauna as well as an array of extraordinary wildlife – at night, the forest really comes alive. The 1½ hour night walk runs in all weather – ponchos and torches are supplied.	Two tours nightly 7pm – 8:30pm 9pm – 10:30pm Book Here

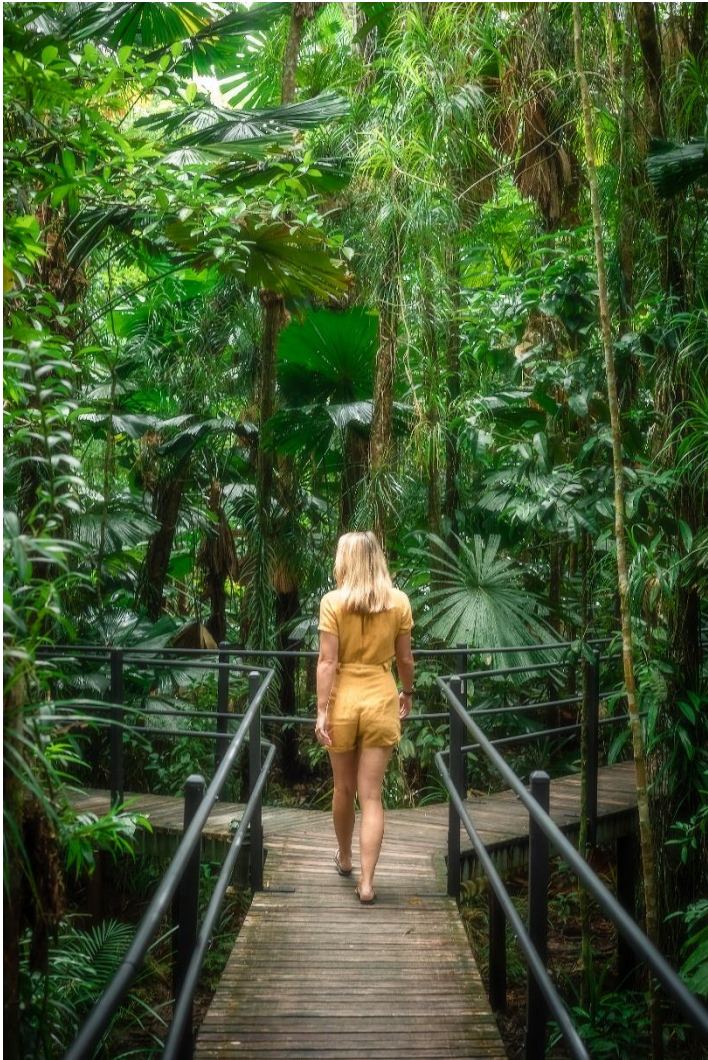
Walking Tours

Tour	Contact Details	Description	Times
Rainforest Walking Tour and Waterfall Swim	Daintree Experience 0467 552 660 daintreeexperience@gmail.com	<p>Step off the beaten path and into the heart of the world’s oldest living rainforest. Leave the crowds behind and embark on a journey through emerald canopies, hidden valleys, and untouched wilderness.</p> <p>Your destination? A secret, secluded waterfall accessible only to a select few.</p> <p>Walk on the Wild Side: Traverse fascinating trails suited for all abilities while spotting rare tropical wildlife. Dive In: Reward your trek with a refreshing swim in a crystal-clear, private waterfall rock pool surrounded by jungle.</p> <p>Local Insight: See the forest through the eyes of a genuine local guide who shares the stories and science of this prehistoric ecosystem.</p> <p>Choose from half-day, or full-day tours, gourmet lunch included, or contact us to custom-build your own tour. Pick ups from Port Douglas and Mossman.</p>	<p>Full Day 8:30am – 4:30pm Book Here</p> <p>Half Day 10am - 4:30pm Book Here</p>
Rainforest Connections Walk	Daintree Siesta 4098 9155 welcome@daintreesiesta.com.au 1973 Cape Tribulation Rd, Diwan	<ul style="list-style-type: none"> ▪ Facilitated 2-3 hour forest therapy walk. ▪ Reconnect with the natural world in the world’s oldest continuous rainforest ▪ A certified Association of Nature and Forest Therapy guide leads 8 or less people on this immersive sensorial experience. ▪ Walk through the rainforest while connecting with and discovering the hidden gems of the diverse flora and fauna that you can only find if you take the time to slowly experience this amazing ancient forest. ▪ Forest Therapy or Forest Bathing (also known as Shinrin-Yoku) is a gentle experience helping you to slow down and take time to engage with the awe-inspiring sights, sounds, smells and textures of the forest. ▪ The walk concludes with a sharing of Tea Under the Trees. ▪ Walk runs in all weather. ▪ Booking payment includes donation to local tree planting project. 	<p>Times vary but usually Monday morning</p> <p>On request for groups of 2 or more.</p>

Walks – Free Self-Guided

Pick up a copy of Daintree Walks Booklet for \$3 for more walks and description.

Name	Location	Difficulty	Distance	Time (return)
Cape Kimberley	Cape Kimberley	Easy	5km	1.5hr
Cape Tribulation to Emmagen Creek	Cape Tribulation	Easy	5km	2.5hr
Daintree Village	Daintree Village – past water tower	Moderate	1.3km	1.5 hr
Dubuji Boardwalk	Cape Tribulation	Easy	1.3km	30min
Emmagen Creek	Cape Tribulation	Easy	0.8km	24min
Jindalba Boardwalk - short	Cow Bay	Easy	0.7km	18min
Jindalba Boardwalk – long	Cow Bay	Moderate	3km	2-3 hours
Kulki Boardwalk	Cape Tribulation	Easy	0.8km	12min
Manjal Jimalji Trail	Whyanbeel	Hard	10.6km	8 hours
Marrdja Boardwalk	Cape Tribulation	Easy	1.1km	36min
Mount Sorrow Ridge	Cape Tribulation	Strenuous	7km	7hr



↑ Weddings & Corporate Event Venues

Property	Location	Contact	Description
Daintree Riverfalls	893 Upper Daintree Road, Upper Daintree	0417 203 991 stay@daintreeriverfalls.com	Blissfully relaxed, secluded holiday lodge set on 450 acres. Walking trails, rainforest swimming holes all on private property. Sleeps 12. 5 bedroom holiday home which sleeps 10 and Eco Tent sleeps 2, perfect for bride and groom. No neighbours so no noise restrictions.
DragonFly	17 Camelot Close, Cape Tribulation	wynta@mail.com 0456 199 682	The original soul of Cape Trib. Magical spaces inside, and wonderful nooks and crannies in the extensive garden. Art classes, weddings, meetings, performances, celebrations. Catering available to meet client needs.
High Falls Restaurant	152 Old Forestry Road, Whyanbeel	4098 8321	Weddings & events.



Daintree Riverfalls – Eco Tent



Daintree Riverfalls – Eco Tent

↑ Wildlife Experiences

Company	Location	Contact	Description
FNQ Nature Tours	Daintree Region	info@fnqnaturetours.com.au 0400 732 883	<ul style="list-style-type: none"> ▪ Half day and full day tours ▪ Perfect for nature lovers. Explore the Daintree River on a quiet, clean solar electric vessel capable of getting much closer without scaring off the wildlife ▪ On a single, dedicated day tour, guests have the rare chance to observe iconic species such as the Southern Cassowary, Tree Kangaroo, and Platypus in their natural habitats, creating an unforgettable adventure for nature lovers. Many of our nature viewing locations are on private land or reserves for complete exclusivity.
Wildlife Habitat	Corner Captain Cook Hwy & Port Douglas Road.	4099 3235 info@wildlifehabitat.com.au 145 Port Douglas Road, Port Douglas	<ul style="list-style-type: none"> ▪ No booking required – walk ins welcome & admission is valid for five consecutive days ▪ See and touch animals up close. ▪ Feeding talks offer opportunities to feed an array of wildlife; get close to a Cassowary ▪ Estuarine Crocodile with our Crocodile Feeding presentation. ▪ Open daily 8am – 4pm – except Christmas Day 25 December



FNQ Nature Tours



wildlife Habitat



wildlife Habitat



Wildlife Experiences

Wildlife Habitat

Activities	Description	Opening Hours
General Admission	<ul style="list-style-type: none"> No booking required – walk ins welcome Standard admission pass is valid for five consecutive days 	8am to 4pm Closed Christmas Day 25 December
Premium Wildlife Experiences		
WildNIGHT Nocturnal Tour	<ul style="list-style-type: none"> 2 hour guided tour of the park after hours led by wildlife keeper Hand-feed kangaroos Meet gliders, pythons, lizards, bettongs, frogmouths, and a spotted tail quoll. Twilight supper 	5:45pm to 7:45pm Book Here
Breakfast with the Birds	<ul style="list-style-type: none"> Breakfast includes eggs of the day, tropical antipasto, grilled specialties, baked goods, teas and coffee Guests get up close and personal with koalas and birds and also chat with our keepers 	8am to 9am Arrive at 7:45am
Croc Feeding	<ul style="list-style-type: none"> 30 minute activity where you feed a big saltwater crocodile. Tap into the Croc Keeper's knowledge to learn about this extraordinary animal Min. Age 16 years 	2:30pm Arrive by 2pm
Swim with the Salties	<ul style="list-style-type: none"> Swim just centimetres away from huge crocodiles. Age 12+ Big Al, Ton and Goliath have an average size of just over 4.5 metres and weigh in at around 350-400 kilograms each 	10am; 10:45am 12:45pm & 1:30pm
YOUR Wildlife Habitat Tour	<ul style="list-style-type: none"> 90 minute personalised tour Enter the koala enclosure for one-on-one time Visit the Tropical Animal Rehabilitation Centre to witness our wildlife rescue efforts, and engage with animals that have been hand-raised by our keepers. This is only available through this tour. Bookings are essential. 24 hours notice required 	8:45am, 10:30am, 12:30pm and 2:00pm



Yoga, Meditation and Wellness

Company	Location	Description	Times
<u>Issani Daintree Day Spa & Ayurveda</u>	0433 496 199 info@issani.com.au 28 Fig Tree Road Cow Bay	<p>Massage therapies in a unique healing sanctuary right in the centre of the Daintree Rainforest. Offers Balinese style or traditional Ayurvedic massages.</p> <p>Mobile massage for two-hour sessions or more, servicing between the Daintree River and Cape Tribulation.</p> <p>Meditation and deep relaxation sessions can be added.</p>	<p>By appointment only.</p> <p>1 hour, 2 hours, 2½ hours or 3 hours.</p> <p>Two-hour regular Deep Relaxation sessions held Thurs & Sun</p>
Yoga Studio	0419 027 807 Wonga Beach State School, Snapper Island Drive, Wonga	<p>Breathe deeply by the sea and settle into stillness. Yin with Schell – A gentle, grounding evening class designed to release tension and restore balance.</p> <p>Mats available. Bring water, a towel and something to cover your body for rest & relaxation. Beginners to Intermediate</p>	<p>Wed 6:00pm</p> <p>Bookings essential</p>
<u>Prema Shanti Yoga & Meditation Retreat</u>	4098 9006 info@premashanti.com.au 183 Turpentine Road, Diwan	<p>Yoga</p> <ul style="list-style-type: none"> ▪ Two one-hour yoga classes suitable for beginners to advanced levels. ▪ Focus is on the postures and poses of the body in yoga practice. ▪ Expect improved flexibility, muscle strength, spine health and posture, mental focus, physical balance and emotional health. ▪ It also reduces depression and anxiety, increases blood flow, and facilitates a healthier lifestyle. <p>Meditation - Daily at 7am - Retreats – Easter, Christmas and New Year packages</p>	<p>Daily sessions:</p> <p>Meditation – 7am</p> <p>Yoga – 6pm</p>
<u>Rainforest Connections Walk</u>	(07) 4098 9155 1973 Cape Tribulation Road, Diwan, Kaba Kada – Daintree Rainforest, QLD 4873 welcome@daintreesiesta.com.au	<p>Guided rainforest experience offering a gentle opportunity to slow down and experience the Daintree on a more personal level. Set within private rainforest on the property, these walks invite guests to connect more deeply with the natural surroundings in a calm and unhurried way.</p> <p>A gentle, immersive experience for travellers seeking a more meaningful and nature-connected way to spend time in the rainforest. Proudly offered as part of an Ecotourism Australia accredited stay.</p>	<p>Subject to availability.</p> <p>Minimum 2 guests</p> <p>Maximum 8 guests.</p> <p>Book Here</p>



4WD Adventures – Guided

Company	Contact	Description	Times
Cape Tribulation and Cooktown Wanderer 3 Day / 2 Night	Adventure North Australia 4047 9076 res@downundertours.com	<p>Day 1: Travel the scenic coastal road, experience a Daintree River cruise before crossing into the rainforest of Daintree National Park. Enjoy BBQ lunch, guided walk and unspoilt scenery of Cape Tribulation Beach. Take in spectacular views as you 4WD along the Bloomfield Track, visiting the iconic Lion’s Den. Dinner incl. & accommodation at the Sovereign Resort in Cooktown.</p> <p>Day 2: Guided tour of Historical Cooktown, Reconciliation Rocks, Foreshore Walk, Cooktown Cemetery, James Cook Historical Museum and the amazing views at Grassy Hill Lookout. Breakfast and accommodation incl. at Sovereign Resort in Cooktown.</p> <p>Day 3: Free time to explore in the morning, guided tour of the Historical Botanical Gardens, Natures Powerhouse Café and Art Gallery, Black Mountain and Byerstown Range Lookouts and Palmer River Roadhouse. Return journey via the Outback. Breakfast and Lunch incl.</p>	Seasonal: May- November Cairns Depart: 6:45am / Return 8pm Nth Beaches Depart 7:15am / Return 7:30pm Port Douglas Depart 8am / Return 6:45pm
Cairns to Cooktown 4WD Tours	0419 759 986 info@nwozsafaris.com.au	<ul style="list-style-type: none"> ▪ Locally owned tour taking in Daintree River ferry crossing Daintree Rainforest, stroll on Thornton Beach, 4WD Bloomfield Track, Lion’s Den Hotel, Cooktown’s Grassy Hill Lookout, James Cook Museum & Cooktown Pub, returning via Black Mountain and Palmer River Goldfields. ▪ April - November - Weekly on a Wednesday 	Cairns – 6:30am to 7:30pm Cairns Beaches 7am to 7pm Port Douglas 7.45am to 6:30pm
Daintree Safaris	4094 1351 info@daintreesafaris.au	Nicholas, one of the region’s most experienced guides will pick you up in our 4WD from your accommodation in Port Douglas or Mossman. Max. 6 guests per tour. Tour includes Daintree River cruise, secret swimming spots, Alexandra Lookout, Cape Trib beach, guided walks, lunch at Heritage Lodge.	7: 15am to 4pm.

4WD Adventures – Guided

Company	Contact	Description	Times
Cassowary Falls	0481 988 307 info@cassowaryfalls.com.au 263 Upper Daintree Road, Upper Daintree	<ul style="list-style-type: none"> 2 ½ hour tour of 100 acre cattle property, with pristine rainforest. Action packed offroad adventure. Splash through creeks on All Terrain Vehicles. Swimming at Cassowary Waterfall. Army Truck ride. Seasonal bush tucker and farm fruit tasting. Tour starts at the farm gate. Self-drive to the property - no 4WD required.	Two tours daily 10am – 12.30pm 1pm – 3.30pm Book Here
Far North Escapes - Customizable trips from Cairns to Cape York.	bookings@farnorthescapes.com 0468 967 703	Based in the Daintree Rainforest, Far North Escapes is a locally owned touring company with over 20 years of experience taking you on unforgettable adventures from Cairns to Cape York, and everywhere else in-between. We specialize in 4X4 Premium, Private, and Small Group tours and have a wide range to suit your needs: Half Day, Full Day and Multi-Day trips. We offer fully customizable itineraries, tours and packages to give you the best experience at the best value possible tailored to you.	AM Tours Pick up from 7:30am PM Tours Pick up from 1:00 Year round availability
Mason's Tours Private Guide	4098 0070 lawrence@masontours.com.au	Personalised tours of the Cape Tribulation Bloomfield Road (Bloomfield Track) and Cooktown area with a third generation resident.	Any day Any time



4WD Adventures - Self-Drive

Cape Tribulation Bloomfield Road	Spectacular 33km journey from Cape Tribulation to Bloomfield River. 4WD only and not suitable for vehicles towing trailers, campervans or caravans. Check conditions here
The CREB Track runs between the Daintree River and China Camp	Extreme 4WD Track maintained by Douglas Shire Council. The southern section goes through Daintree rainforest, which makes much of this track so beautiful. The starting point is 10 kilometres past Daintree Village on Upper Daintree Road, and it finishes at China Camp and Kija (Roaring Meg Falls). For official road open/closure information: Check Here For unofficial road conditions, Check Here . Or call PJ on 4060 3136. CREB Track Retrievals: Toxi's CREB Track Recovery 0497 139 090
Bookings are essential CJ Fisher 4098 6248 or yindillicamp@gmail.com	Kija (Roaring Meg) can be accessed as follows: From Daintree Village, travel along the CREB Track From Cape Tribulation, travel north on Cape Tribulation Bloomfield Road, and take Zig Zag just south of Degarra to travel up to China Camp Road. From the north, take China Camp Road turnoff at Ayton. Camp at Kija, or at Yindilli Camping Ground which offers toilet facilities, fireplaces (for cooking etc), dry firewood, walking tracks to Bairds Creek for swimming in crystal clear mountain waters and grassed camp sites. You can also choose from two guided tour with traditional owner CJ Fisher a Kuku Yalanji Elder and Buru Traditional Owner who will lead you on a true cultural experience. Rainforest Walk: Approx. 1hourr walk through nearby rainforest and includes: a 'welcome' smoke ceremony, stories & identification of bush tucker, damper & tea. Cultural Sites Walk: A full day experience. Approx. 1 hr walk to a site of cultural & spiritual significance to the Kuku Yalanji people. Includes a 'welcome' smoke ceremony, stories, face & body painting with traditional clays, bush tucker demonstrations and bathing in the healing waters of the pristine Meg River. Also included is a picnic lunch and refreshments.



Restaurants

Name	Contact / Address	Times / Description of Menu	Licensed
Cape Tribulation			
<u>The Sandbar Cape Trib Camping</u>	4098 0077 stay@capetribcamping.com.au 3812 Cape Tribulation Road, Cape Trib.	Lunch and Dinner 12:00 – 8pm Air conditioned, beachfront Takeaway & dine In Woodfired Pizza Walks In Welcome	Yes
<u>Tides Bar & Restaurant</u>	4098 0030 reservations@capetribbeach. com.au Cape Trib Beach House 152 Rykers Road, Cape Trib.	8am to 10am Breakfast 12 – 2:30pm Lunch 6pm – 8pm Dinner Bar Open 10am to Close	Yes
<u>Cassowary Restaurant</u>	4098 0000 Bookings Essential bookings@ferntreelodge.com Ferntree Rainforest Lodge	7am – 10am Dinner 5 - 8pm Fri-Tues Full Menu Wed: Pizza Thu: Pasta Bar Open 7 days 4pm till late Happy Hour 4 - 5pm	Yes
<u>Friendly Grocer & Souvenirs Store</u>	3910 Cape Tribulation Road 4098 0100	Daily 9am to 5:30pm Stocks sandwiches & a wide range of healthy snacks & cold drinks.	No
<u>Mason's Café</u>	4098 0070 lawrence@masonstours.com.au 3781 Cape Tribulation Road Cape Tribulation	11am – 3pm Lunch featuring local produce include tea, coffee, fruit & (Closed for Easter 2026 delicious Breadfruit and Jackfruit burgers. All smoothies contain fruit from Mason's Farm.	Yes
<u>Turtle Rock Café</u>	(07) 4098 006 3902 Cape Tribulation Road, Cape Tribulation	7:30am – 3pm Fresh wholesome food, great coffee and outdoor dining, with a casual friendly atmosphere. Gourmet salads, burgers, bowls, locally caught fish & chips, and takeaway items made to order.	Yes
Thornton Beach			
<u>Thornton's</u>	0421 094 791 jason@daintreespiceco.com.au 2588 Cape Tribulation Road Thornton Beach	Beach front restaurant Open for lunch from 10 am Thursday to Monday. Saturday evenings 5-7pm for fish and chips. Extensive Bar open 10 am to close.	Yes



Restaurants

Venue & Location	Contact	Description	Licensed
Diwan			
Daintree Fan Palm	0413 935 955 1882 Cape Tribulation Road Diwan	Mon – Thu 9am to 5pm Fri 9am to 3pm Sat Closed: Sunday 10am – 3pm Organic coffee made with organic milk, organic wholefoods shop, local produce, organic fresh fruits and veggies, exotic tropical fruit for sale, organic ice-cream, organic drinks, freshly baked organic cakes & slices, organic hot pies (vegetarian, vegan, gluten-free options), souvenirs, Gallery of the Giant Fan Palms boardwalk & organic tropical fruit tree orchard.	No
Daintree Ice Cream and Tropical Fruit Orchard	1819 Cape Tribulation Road, Diwan 0417 415 054 hello@daintreecream.com.au	9am to 5pm. Ice cream with organically grown fruit from the orchard served in a 4-scoop 'signature cup' which includes many rare and exotic flavours which are changed daily. Plus, Barista Coffee.	No
Daintree Peaks Eco Stays	22 Ironbark Rd Diwan 4098 9002 daintreecobnb@gmail.com	Open 10am – 8pm Menu changes frequently to present dishes using locally harvested produce.	Yes
Daintree Rainforest Village	0466 658 399 2094 Cape Tribulation Road	Open from 7am to 6pm Snack foods including hot servo pies from Mrs Mac and Outback.	No
Daintree Siesta Restaurant	(07) 4098 9155 1973 Cape Tribulation Road, Diwan, Kaba Kada – Daintree Rainforest, QLD 4873 welcome@daintreesiesta.com.au	Relaxed, licensed rainforest dining for lunch and dinner in the heart of the Daintree. Surrounded by lush tropical gardens, the al fresco dining area offers a peaceful place to slow down, refuel and enjoy the moment. A welcoming stop for self-drive travellers and nature lovers embracing a laid-back pace through Cape Tribulation and the Daintree. Lunch: Sunday to Friday, 12:00–2:00pm Dinner: Sunday to Friday, 5:30–7:00pm Closed Saturdays Bookings recommended in high season.	Yes
On The Turps	Heritage Lodge 96 Turpentine Road 4098 9321 reservations@heritagelodge.net.au	12pm – 2pm Lunch 6pm – 7:30pm Dinner Our open air restaurant sits along the edge of picturesque Cooper Creek with the Daintree rainforest enveloping you. Dining experience is idyllic and tranquil. Booking are recommended	Yes



Restaurants

Cow Bay			
Daintree Discovery Centre	4098 9171 info@discoverthedaintree.com 24 Tulip Oak Road, Cow Bay	All day dining 9am – 5pm Café items.	No
Crocs Cafe Daintree Crocodylus	0402 735 124 161 Buchanan Creek Rd, Cow Bay daintree.crocodylus@gmail.com	Healthy & Home-Cooked: Fresh breakfast and dinner with a strictly deep-fryer-free kitchen. Wholesome, budget-friendly options for vegans, vegetarians, gluten-free diners, and carnivores. Family-Friendly Vibe: No reservations needed—just wander in for "unplugged" fun with our board game collection. Breakfast 8-9.30am Dinner 5:30pm to 7pm	Yes
Floravilla Ice Cream Factory	335 Cape Tribulation Road Cow Bay betty@bettyhinton.com.au	Daily 9:30am to 4:30pm Mon – Fri - Toasted sandwiches, tea and coffee Endemic bird paintings for sale on cards, mouse pads, mugs and ceramic coasters.	No
Daintree Village			
Croc Xpresso	4098 6120 3 Stewart Street, Daintree Village	From 7:30am to 3pm	Licensed
Daintree Tea House	4098 6161 3225 Mossman Daintree Rd Reservations preferred daintreeteahouse52@bigpond.com	Open for pre booked tour groups only. Longest established restaurant under one ownership in North Queensland – trading since 1980, current owners since 1987.	Licensed
Daintree Village Hotel	4098 6146 daintreepub@hotmail.com	Monday to Saturday 11:30am to 8:30pm Sunday 12pm to 5pm	Yes
Julaymba Restaurant & Bar	4098 6100 reservations@daintree-ecolodge.com.au 3189 Mossman-Daintree Road, Daintree Village	7:30am – 10am - Breakfast 12 – 2pm Lunch 5:30pm – 8pm Dinner Dine on the balcony overlooking the lagoon amidst the rainforest. Menu rotates over two days and changes regularly to showcase produce from the onsite vegetable garden and surrounding farms.	Yes
Crossroads – Lower Daintree			
Crossroad Café	2539 Mossman Daintree Road, Lower Daintree crossroadscafe@outlook.com.au	Saturday to Tuesday 7am – 3pm Closed Wed - Friday	Yes
Crossroads	Seasonal fruit available at the farm gate		No



Restaurants

Wonga Beach			
Hook-a-Barra	Corner Mossman Daintree Road and Vixies Road, Wonga Beach 4098 7117	Open for lunch 7 days a week Hook-A-Barra kitchen produces some of the finest Barramundi dishes to be found. Choose from classic fish & chips, Barramundi burgers, fish tacos, smoked Barramundi or gyoza. Tasting boards, to sample a little of everything.	No
Daintree Beach Resort	113 Vixies Road Wonga Beach 4099 9600	Food & Beverage Van in stunning bush setting. Open 7 days; Breakfast 7am – 11am; Dinner 4 – 8pm.	Yes
North Mossman & Whyanbeel			
Silky Oaks Lodge Treehouse Restaurant	Reservations: 4098 1666.	We welcome children 10 years and over Open to local guests for lunch (only) by prior reservations. Cater to all dietaries including vegan, vegetarian and gluten free	Yes





Grocery Stores

There is an abundance of foods which are grown or manufactured here in the Wet Tropics. Our grocers make the effort to support our local primary producers enabling visitors to sample foods unique to this region.

Cape Tribulation

Mason's Store Groceries and Takeaway Alcohol

Mason's Store has Beach Harvest coconut chips, muesli and granola, coconut sugar etc, with some coconuts harvested from Mason's property. The store also stocks Tichum Creek coffees, Tea Chest and Daintree Tea, local chocolate, dried and fresh fruit from the farm when in season.

Closed Good Friday; Open Saturday, Easter Sunday & Monday 12 to 4pm. Tuesday 11am to 5pm.

Friendly Grocer and Souvenir Store

Friendly Grocer & Souvenirs Store is located in the heart of Cape Tribulation and offers the areas largest range of Grocery supplies & Souvenirs. Graham stocks an extensive range of grocery supplies including milk, bread & meat and most items to stock up your supplies for your visit to the area including fishing supplies. Just up for the day, we have you covered for ice cream, cold drinks, chips & snacks for your adventure. Looking for that keep-sake of your visit to Cape Tribulation, we also offer an extensive range of local souvenirs including Cape Tribulation clothing, footwear, postcards & local items like Daintree Tea & Chai's, Daintree Chocolate & Daintree Spices to name a few. Looking for adventure, we have you covered. Our staff can give you advice on what Tours are available in the local area. The best swimming holes to visit or walks through the Jungle. Friendly Grocer and Souvenir Store is Cape Tribulation's one stop shop, shop local to support local business.

Open Daily 9am to 5.30pm.

Diwan

Daintree Fan Palm Farm

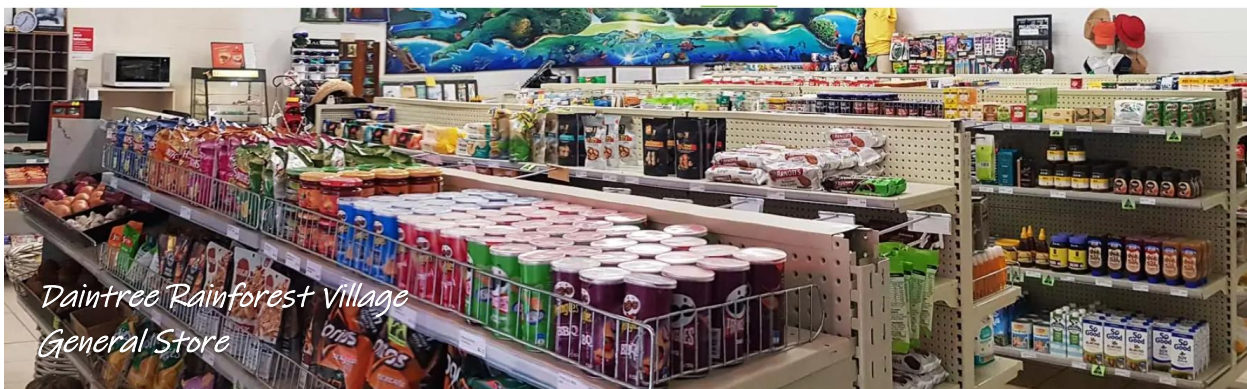
Organic foods wholesaler with wide range of organic products, organic fresh fruit and vegetables, organic bread, frozen meals, healthy snacks, organic ice-cream, cakes and slices which are baked daily and organic pies.

Open Mon – Thu 9am to 5pm; Fri 9am to 3pm; closed Saturday; Sunday 10am to 3pm.

Daintree Rainforest Village General Store

Located on Cape Tribulation Road, this is the biggest little supermarket in Daintree. It stocks fresh produce and dairy, meat, seafood, ice creams, snacks and confectionery, canned and frozen foods and desserts, a range of yummy breads, and pet food. You will find pharmacy products, baby care items, hardware and camping stuff, toys, gifts and souvenirs, locally made crafts and local fresh fruit. They are an agent for Australia Post, have an ATM and a FREE public phone onsite, plus OPTUS phone signal. The only fuel station north of the river and also sell ice, gas, bait and smoking products.

Open Daily 7am to 6pm.



*Daintree Rainforest Village
General Store*

Miallo

Scomazzon Farm Store

Angela and Luigi Scomazzon's farm store sits at the base of their farm along the Mossman-Daintree Road just past Newell Beach turn off. They grow and produce tropical fruits and vegetables and stock artisan local produce from across the Far North including Kefir Queen, The Good Shroom, Beach Harvest, The Tea Chest, Dukes Donuts and ready to eat meals from Grant Street Kitchen.

Open Mon to Fri 8:30am to 5:30pm; Sat 8am – 3pm; Closed Sundays



Coach Tours – Daintree

Company & Tour	Contact	Description	Time
Private Daintree Wanderer Tour	Australian Luxury Escapes 1300 792 213 tours@australianluxuryescapes.com	<ul style="list-style-type: none"> ▪ Full Day Daintree Tour ▪ Daintree River Cruise ▪ Morning tea under rainforest canopy ▪ Lunch ▪ Cape Tribulation Beach ▪ Alexandra Range Lookout ▪ Daintree Icecream 	7:25am Thala Beach 7:30am Port Douglas Return 5:45pm
Billy Tea Safaris	Billy Tea Safaris 4032 0077 info@billytea.com.au	<ul style="list-style-type: none"> ▪ Full day Daintree Rainforest and Cape Tribulation tour including Daintree River cruise, Emmagen Creek, Cape Tribulation Beach 	Pick up 8.20am Return 4.00 – 4.30pm
Cape Trib Connections	Cape Trib Connections info@capetribconnections.com Free call: 1800 838 757 Call anytime between 6am and 10pm	<ul style="list-style-type: none"> ▪ Full Day Daintree Tour ▪ Morning or afternoon refreshments; Lunch may be pre-booked or BYO. ▪ Wildlife cruise on Daintree River ▪ Alexandra Lookout ▪ Guided rainforest walk ▪ Cape Trib Beach (Kulki day-use area) ▪ Mossman Gorge 	8:00am to 5:00pm
Cassowary Falls Daintree Waters Tour	Cassowary Falls 0481 988 307 info@cassowaryfalls.com.au	<ul style="list-style-type: none"> ▪ Full Day Daintree Tour. ▪ 2 ½ hour Cassowary Falls Tour including: All action ATV rides on private property, swimming at Cassowary Falls, Army Truck ride, Seasonal Bush Tucker and Farm Fruit tasting. ▪ 1 Hour Daintree River Cruise. ▪ Light lunch. ▪ Friendly Guide. ▪ Return Transfers from Port Douglas 	8.15am Port Douglas, Returns 3.30pm – 4pm.



Coach Tours – Daintree

Company & Tour	Contact	Description	Time
Daintree Discovery Tours	Daintree Discovery Tours info@daintreediscoverytours.com.au 40982878	<ul style="list-style-type: none"> ▪ Full Day Daintree tour ▪ Mossman Gorge & Cape Tribulation ▪ Daintree River Cruise ▪ Interpretive rainforest walks ▪ Lunch at On The Turps restaurant at Heritage Lodge ▪ Swim in Cooper Creek ▪ Daintree ice-cream (optional extra – not included in ticket price) ▪ Alexandra Lookout 	7:25am to 5:30pm
Daintree Discovery Tours	Daintree Discovery Tours info@daintreediscoverytours.com.au 40982878	<ul style="list-style-type: none"> ▪ Half Day tour ▪ Daintree River Cruise ▪ Mossman Gorge, rainforest walk ▪ Swim in rainforest stream – conditions permitting 	7:25am to 12:30pm Or 12:50pm to 5:30pm
Daintree Safaris	Daintree Safaris 4094 1351 info@daintreesafaris.au	Full Day Nicholas, one of the region’s most experienced guides will pick you up in our 4WD from your accommodation in Port Douglas or Mossman. Max. 6 guests per tour. Tour includes Daintree River cruise, secret swimming spots, Alexandra Lookout, Cape Tribulation Beach, guided walk, lunch at Heritage Lodge.	7:15am – 4:30/5pm
Unique Daintree Food Tour - Explore Hidden Treasures	Daintree Sensations 4098 7117 info@daintreesensations.com.au	Full Day - This carefully curated itinerary includes iconic farms and award-winning producers, where you’ll enjoy some of the finest and freshest produce of the Daintree and visit some simply spectacular destinations. Highlights include chocolate tasting, sampling exotic tropical fruits, a gourmet platter of Daintree Saltwater Barramundi for lunch, a chance to lure and land your own barra. Swim at Cassowary Falls, and end with our very own Tastes of the Daintree artisan grazing board, served picnic style at the waterfall.	Wednesday To Saturday 9am to 5pm
Daintree Rainforest Tours	Daintree Tours 4231 8012 info@calypsoreefcruises.com	Full day tour in luxury Mercedes with just 11 guests; crocodile cruise on Cooper Creek, Mossman Gorge and lunch at Heritage Lodge.	



Coach Tours – Daintree

Company & Tour	Contact	Description	Time
Discovery Tours Australia Premium Rainforest Tour	Discovery Tours Australia 1300 32 10 19 info@discoverytours.com.au	<ul style="list-style-type: none"> ▪ Premium full-day (10 hours), small-group tour ▪ Daily departures & pickup from Port Douglas accommodation ▪ Visit Mossman Gorge, Daintree Rainforest, Cape Tribulation, Alexandra Lookout and Daintree River ▪ Includes scenic coastal drive, guided botanical rainforest walks, cable ferry crossing, Daintree River croc & wildlife cruise, refreshments, and quality restaurant lunch with exotic fruit tasting. ▪ Group size: 2-16 guests ▪ Age: 4 years + 	From 8:45am
Downunder Tours	Downunder Tours 4047 9066 res@downundertours.com	<ul style="list-style-type: none"> ▪ Full Day Tour Cape Tribulation, Daintree & Mossman. Includes Mossman Gorge, Daintree River Cruise, tropical BBQ lunch, Cape Tribulation Beach, exotic fruit ice cream and Alexandra Lookout. ▪ Purpose built luxury vehicles / Experienced guides / Eco Accredited / ▪ GPS activated commentary available in 6 foreign languages. 	
Daintree Exclusive Tour - FNQ Nature Tours	FNQ Nature Tours 0400 732 883 info@fnqnaturetours.com.au	<ul style="list-style-type: none"> ▪ Full Day ▪ Daintree river wildlife cruise ▪ Mossman Gorge Rainforest Track and swimming option ▪ Tropical themed 2 course lunch ▪ Mossman Gorge ▪ Scenic stop for ocean views ▪ Max. 11 guests 	8:30am to 4:30pm
Daintree Afternoon & Nocturnal Tour	FNQ Nature Tours 0400 732 883 info@fnqnaturetours.com.au	<ul style="list-style-type: none"> ▪ Full Day Tour of the Daintree Rainforest at night – 9 hours ▪ Cruise the Daintree River spotting wildlife on a quiet, clean solar electric boat. ▪ Dine in the rainforest before venturing out on foot to discover the nocturnal world. ▪ Age 14+ ▪ Max. 11 guests 	1:30pm to 10:30pm

↑ Coach Tours – Daintree

Company & Tour	Contact	Description	Time
Tony's Tropical Tours	Tony's Tropical Tours 0429 993 230 info@tropicaltours.com.au	Full day tour taking in Mossman Gorge, Daintree River cruise and Alexandra Lookout to enjoy sweeping views extending from the Daintree River Estuary to the Coral Sea. Then explore the rainforest at Noah Valley, a World Heritage Listed private property which supports some of the most spectacular, pristine rainforest found anywhere in the world and enjoy a refreshing swim in the crystal-clear rainforest stream. Max. 11 guests. Age 7+	Two departure times: 7:15am – 4:30pm or 8:15am to 5:30pm
Cape Tribulation & Daintree	Tropic Wings Tours & Charters 4041 9400 daytours@tropicwings.com.au	Full day adventure to the Daintree Rainforest and Cape Tribulation. Includes morning tea at Wildlife Habitat an immersive wildlife experience. Lunch at Mason's Café and a dip in the freshwater swimming hole. Walk in the world's oldest rainforest and on Cape Tribulation Beach and stop at Alexandra Lookout and enjoy a Daintree River cruise on the way home.	





Ferry

Open: 5am to 12 midnight daily 365 days a year.

Website: www.daintreeferry.com.au

Timetable: The Ferry has no set times; it continuously travels back and forth as required.

River Crossings: If the ferry leaves immediately upon your arrival, 4 minutes
If you've just missed the ferry, it will take 20 minutes.

During the peak tourist season there is often a long queue of cars waiting to cross the ferry. Particularly between 10am and noon travelling north and between 3pm to 5pm travelling south. If you want to avoid the queues, plan to travel before 10am and spend the whole day exploring the rainforest and beaches, have dinner at one of the many restaurants and travel back in the evening. The ferry operates right up until midnight.

Tickets: You can pre-purchase ferry tickets online from website-scan QR code

EFTPOS is available at all times.

Prices as from 1 July 2025

\$51 return standard vehicles
\$51 return bus 6 – 10 seats
\$83 return bus 11 – 20 seats
\$145 return bus 21+ seats
\$70 return car & caravan or trailer



Payment: Pay at the Ferry Booth, which operates from 8.00am to 4:30pm.
Outside of these times pay on the Ferry. EFTPOS available all hours.

Priority Lane: During the peak tourist season (June to October) an additional lane is open between 9am and 4:30pm to allow local residents to meet their normal commitments such as work and school.

Contact: **Telephone** 0438 987 536 **Email** info@daintreeferry.com.au

Douglas Card

Residents living in Douglas, Mareeba, Tablelands, Cairns, Cassowary Coast and Cook Shires may apply for a **Douglas Card** for free access on the Daintree ferry for five months from 1 Nov to 28 Feb each year.

The card never expires and it's free. You can apply online, [DF02-Douglas-Card-application-form.pdf](#) or in person.

Applicants need to provide photographic identification and additional proof of residency with their application to confirm local status. Application forms are available from Douglas Shire Council's website, Council's Mossman Administration Building, the Mossman Library and the Port Douglas Hub in Mowbray St Port Douglas.



Driving Distances

When travelling north of the Daintree River, there are some restrictions.

Cape Tribulation Road is open to all vehicles through to just past Cape Trib Beach House. A 4WD is needed to travel further north on the Cape Tribulation Bloomfield Road, through to Emmagen Creek and Cooktown.

- If crossing Alexandra Range, maximum length without a pilot escort is 19 metres.
- Maximum weight of vehicles is 25 tonnes.
- Noah Creek Bridge has a weight restriction of 16 tonnes – heavier vehicles may use detour.
- Noah Causeway – available for heavy vehicles up to 25 tonnes but is subject to tides.

Cairns to:

Port Douglas	1 Hour	70 km
Mossman	1 Hour 20 min	85 km
Daintree River	1 Hour 40 min	110 km
Cow Bay	2 Hours 10 min	130 km
Diwan	2 Hours 20 min	140 km
Cape Tribulation	3 hours min	160 km - allow 3 hours 15 mins in peak season

Port Douglas to:

Cairns	1 Hour	70 km
Mossman	20 min	15 km
Daintree River	1 Hour	40 km
Cow Bay	1 Hour 10 min	50 km
Diwan	1 Hour 40 min	60 km
Cape Tribulation	1 Hour 50 min	90 km – allow 2 hours 15 mins in peak season

Daintree Village to:

Cow Bay	45 minutes
Diwan	55 minutes
Cape Tribulation	1 hour 15 minutes
Mossman	30 minutes
Port Douglas	45 minutes
Cairns	90 minutes

Daintree Ferry to:

Cow Bay	20 minutes
Diwan	30 minutes
Cape Tribulation	50 minutes

Cow Bay to:

Cooper Creek	20 minutes
Cape Tribulation	30 minutes

Cape Tribulation to:

Bloomfield	60 minutes
Mossman	70 minutes
Port Douglas	90 minutes
Cairns	3 hours

Links to Visitor Maps of Region

[Daintree Visitors Map](#)

[Greater Daintree Map](#)

Major roads Daintree River to Bloomfield River





Community Facilities

ATMs

Wonga Beach	Ampol, Mossman Daintree Rd	4098 7616
Diwan	Daintree Rainforest Village	0466 658 399
Cape Tribulation	Cape Trib Camping reception office	4098 0077
Cape Tribulation	PK's	4098 0040

Boat Ramps

Rocky Point Boat Ramp, Rocky Point
Public Wharf, near Daintree Ferry Crossing
Town Common, near Daintree Village Jetty

Car Hire / Vehicle Access

There is a sealed road from the Daintree River ferry crossing all the way through to the Cape Trib Beach House. It is suitable for all vehicles – a 4WD vehicle is not required.

Past Cape Trib Beach House, the road unsealed and is the start of Cape Tribulation Bloomfield Road which goes through to Wujal Wujal and Cooktown. Cape Tribulation Bloomfield Road (sometime referred to as The Bloomfield Track) is strictly 4WD only. The road is also not suitable for vehicles towing trailers, campervans or caravans.

During the wet season it may become impassable. There are no saltwater crossings, but several water crossings, and steep sections. Conditions can change rapidly, especially during heavy and monsoonal rainfall. Check with Mossman Police, Wujal Wujal Police and/or go to Douglas Shire Council website:

<http://dashboard.douglas.qld.gov.au/>

The CREB Track connects Daintree Village with Ayton. It is an extreme 4WD track. It is usually closed during the wet season and reopens after the wet. As the weather changes every year, so does the opening and closing of the CREB. It can open as early as May, or as late as August. Check Douglas Shire Council website for updates, and you can recent conditions by checking this Facebook site: [Local CREB Track conditions | Facebook](#). It provides up to date information, and those who have recently driven put up posts.

Chemists

LiveLife Pharmacy, 63 Front Street (Town & Country) Mossman 40981242
Mason's Store & Daintree Rainforest Village both carry limited Pharmaceuticals

Churches

St Augustine's Catholic Church Grogan St Mossman 4098 2001
Mossman Uniting Church, 36 Front St Mossman 4098 1153
Anglican Church, 5 Foxton Avenue
Jehovah Witness Kingdom Hall, 80 Alchera Drive, Mossman
Mossman Seventh Day Adventist, 60 Alchera Dive
Chapel at the Kubirri Aged Care Centre, 49 Johnston Road, Mossman 4084 4900
- Sunday service at 10:30am for residence and is open to the public when suitable.

Community Hall

24 Osborne St, Daintree Village 4099 9444

Dump Points

There are three free, public use dump point for sewerage only.

1. Teamsters Park, Captain Cook Highway, Craiglie.
Latitude: - 16.539663; Longitude: 145.469684.
2. In the car park area of the Mossman Riverside Leisure Park, 1 Park Street, Mossman.
Latitude: - 16.455227550125315; Longitude: 145.37193869953626
3. Daintree Village, next to the public amenities block in Dagmar Street.

Cape Tribulation Camping has a Dump Point for Chemical Toilets for guests staying in at the property.

E-Car Charging Points

- Mossman Gorge Centre – 212 Mossman Gorge Road, Mossman
- Wildlife Habitat – Corner of Captain Cook Highway and Port Douglas Road
- Oaks Resort – Tesla Charging Station – 87-109 Port Douglas Road, Port Douglas
- Mantra Heritage, 16-18 Warner Street, Port Douglas
- Hartleys Crocodile Adventure - Harry Freeman Drive, Captain Cook Highway, Wangetti

Fuel

Ampol 438 Mossman Daintree Rd, Wonga Beach 5:30am to 8pm	4098 7616
Daintree Rainforest Village – Diwan 7am to 6pm	0466 658 399

Medical Centres

Tea Tree Road, Diwan - Open Monday to Friday	4098 9296
Mossman Medical Centre, Town & Country 63 Front St Mossman	4098 1248
Mossman Hospital – 24 hours - Hospital St, Mossman	4084 1200
QML Pathology Town & Country 63 Front St Mossman	0466 354 567

Police

Emergencies	000
Queensland Police – Mossman	4098 2177

Post Office

Mail delivery North of Daintree River – Monday, Wednesday and Friday	
Post Office Agency—Daintree Village Hotel – daily mail	4098 6146
Mason’s Store – Cape Tribulation - sells postal items	4098 0070
Daintree Rainforest Village – Post Office Agency Diwan	0466 658 399

Power /Electricity

Mains power south of the Daintree Ferry
 No mains power north of the Daintree Ferry (exception is some residences in Forest Creek)
 All residents produce power independently using generators, solar panels or hydro turbines.

Schools

Daintree State School - Osborne St, Daintree Village
 Alexandra Bay State School – Cape Tribulation Road, Diwan
 Miallo State School - Miallo Road, Miallo
 Wonga Beach State School, Wonga Beach

Telecommunications

Satellite broadband or Next G network
 Limited mobile coverage north of Daintree River (Next G gives best coverage)
 Telstra & Optus coverage at Cape Tribulation (roughly Noah’s Range to just south of Kulki Beach)

Private Transport

Down Under Tours www.downundertours.com/private-tours/ **(07) 4047 9004**

Explore the ancient rainforest on an intimate private tour with our own experienced local guide. Down Under Tours vehicles are chosen specifically to suit private touring for up to 6 passengers to travel in comfort and luxury. Private touring for larger groups may be arranged to suit your needs. E: groups@downundertours.com.

WindSwell www.windswell.com.au **0427 498 042**

WindSwell offers a unique way to arrive at your Daintree destination - whether it be to your accommodation or a local tourist attraction or activity. The company has two high speed, rigid inflatable boats which can take you to/from Port Douglas to Cow Bay, Thorntons Beach or Cape Tribulation. To book, call 0427 498 042 or email Brett windswellkitesurfing@gmail.com

Public Transport

Cairns to Cooktown – Same Day Return Tuesday, Thursday and Saturday.

Trans North Bus & Coach - Telephone: (07) 3036 2070

If Cape Tribulation Road, and/or Cape Tribulation Bloomfield Road is closed, the Cairns to Cooktown service travels the inland route. Cairns to Mossman, and then up the Rex Range and Mulligan Highway to Cooktown, calling into Mungumby, Helenvale, Rossville, Ayton and Wujal Wujal on the Rossville Bloomfield Road, returning the same way.

Schedule for Coastal Road Route

Pick Up/Drop Off	Depart	Pick Up/Drop Off Location	Depart
Cairns	6:30am	Cooktown	1:00pm
Smithfield	6:50am	Mungumby	1:15
Trinity Beach	6:55am	Helenvale	1:20
Cairns Tropical Zoo	7:00am	Rossville	1:25
Palm Cove	7:05am	Ayton	1:50
Port Douglas IGA	7:40am	Wujal Wujal	2:10
Mossman - arrive	7:45	PKs	3:15
Mossman - depart	8:00	Masons Store	3:16
Wonga Beach	8:10	Crocodylus	3:38
Daintree Ferry	8:30	Cow Bay	3:40
Cow Bay	8:50	Daintree Ferry	3:55
Crocodylus	8:52	Wonga Beach	4:15
Masons Store	9:15	Mossman - arrive	4:30
PKs	9:17	Mossman - depart	4:45
Wujal Wujal	10:17	Port Douglas	5:00pm
Ayton	10:27	Palm Cove IGA	5:20
Rossville	10:45	Cairns Tropical Zoo	5:25
Helenvale	11:00	Trinity Beach	5:30
Mungumby	11:08	Smithfield	5:35
Cooktown - arrive	11:30	Cairns - arrive	6:00pm

RACQ / Repairs

Burmacks, Mill St Mossman
Cow Bay 24/7
Toxi – CREB Track Retrievals

4098 2848
131111

Public Telephones [Calls within Australia are free]

- Stewart St, Daintree Village – outside the pub.
- Airstrip, Cow Bay
- Daintree Rainforest Village, Diwan
- Turtle Rock Café, Cape Tribulation

↑ Swimming Spots

During summer months (usually November to May but the season may differ by a matter of months depending on weather conditions) it is not advisable to swim in the ocean without seeking advice from local operators as stinging jellyfish may be present.

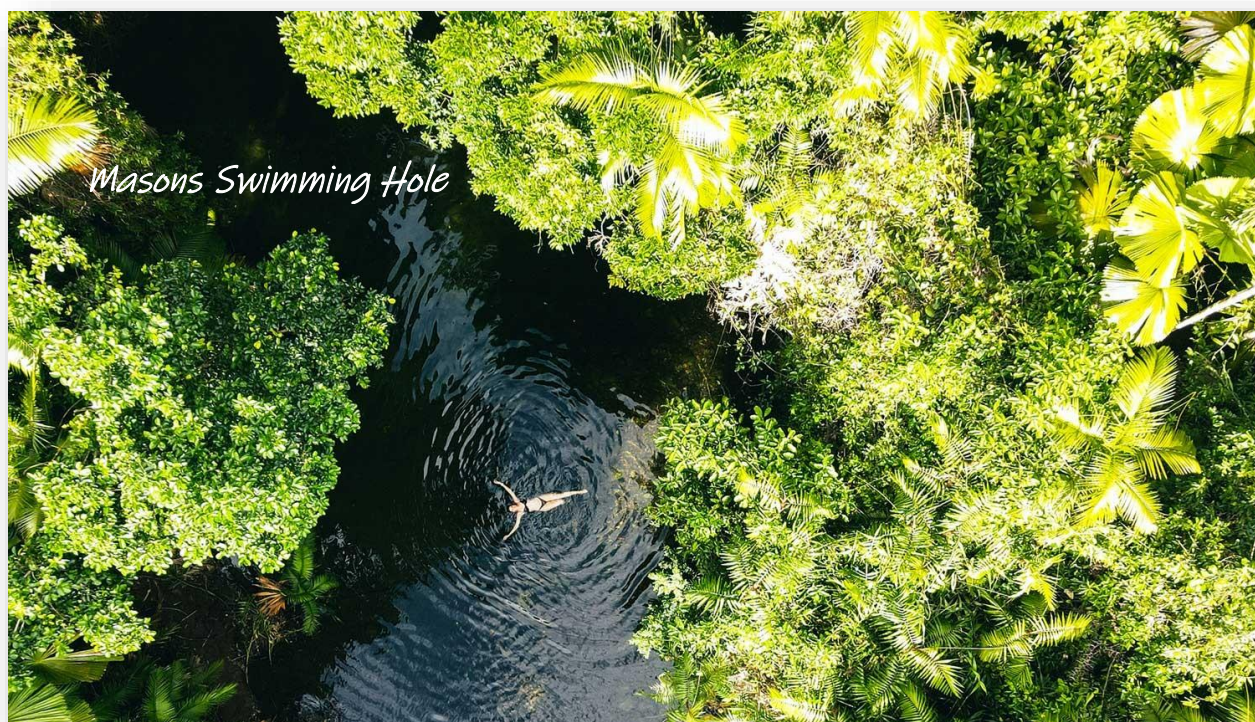
Throughout the year, it is always advisable to consult with local information centres and/or with local operators before entering waterways, and always avoid creek mouths, tributaries and the Daintree River or any other area where Crocodile warning signs are present.

All the resorts have swimming pools, and many holiday homes have private rainforest creeks with swimming holes for guest to enjoy swimming in the rainforest in fresh, cool water.

On the north side of the Daintree River, Mason's Swimming Hole at 3781 Cape Tribulation Road, Cape Tribulation is open to the public for a gold coin donation.

At Daintree Fan Palm Farm, there's a bridge over a creek, which during the wet season is a great spot for swimming. Check with Gina in the

If you dine at On The Turps Restaurant at Heritage Lodge, 96 Turpentine Road, Diwan, you are welcome to have a refreshing swim in the adjacent rainforest swimming hole in Coopers Creek.



Crocwise in croc country

Crocodiles are potentially dangerous. Never take unnecessary risks in crocodile habitat. Everyone is responsible for their own safety, so please follow these guidelines and be crocwise in croc country.

- Obey crocodile signs—they are there for your own protection.
- Never swim in water where crocodiles may live, even if there is no warning sign present.
- When fishing, always stand a few metres back from the water's edge and never stand on logs or branches overhanging the water.
- Never clean fish or discard fish scraps near the water's edge or at boat ramps.
- Stay well back from any crocodile slide marks. Crocodiles may still be close and may approach people and boats.
- Never dangle your arms or legs over the side of a boat. If you fall out of a boat, get out of the water as quickly as possible.
- Never provoke, harass or interfere with crocodiles—even small ones.
- Never feed crocodiles—it is illegal and dangerous.
- Camp at least two metres above the high-water mark and at least 50 metres from the water's edge. Avoid places where native animals and domestic stock drink.
- Never leave food scraps at your campsite. Always check that previous campers have left no food scraps.
- Never prepare food, wash dishes or pursue any other activities near the water's edge or adjacent sloping banks.
- Be more aware of crocodiles during the breeding season—September to April.

Wheelchair Access

- Cape Trib Beach House is wheelchair friendly and has two wheelchair accessible cabins
- Cape Trib Farm has one cabin suitable for wheelchairs.
- Dubuji, Kulki and Mardja boardwalks are suitable for wheelchairs.
- Daintree Discovery Centre has wheelchair access from the entry point, across aerial walkway to Display Centre and the base of the Canopy Tower.
- Croc Express in Daintree Village has wheelchair access
- Daintree Peaks Eco Stays has wheelchair access accessible cabin, restaurant and pool
- Daintree Rainforest Village – shop has wheelchair access and disabled parking space
- Daintree Siesta welcomes guests with a range of accessibility needs. Restaurant seating is wheelchair accessible via a ramp from the driveway, however the bar and toilets are not wheelchair accessible. One accessible lodge-style room is available, and guests using wheelchairs or mobility scooters have also enjoyed stays in the campground. Guests with other accessibility needs, including vision and neurodiversity, have also stayed with us comfortably. Please visit our [website](#) for more details, or feel free to call to discuss any specific requirements before your stay.
- Rainforest Connections Walks can also be adapted for accessibility for private bookings
- Daintree Village Hotel has wheelchair access
- Daintree Wild Bed & Breakfast has wheelchair access
- Hook-a-barra is wheelchair friendly
- Mason's Store and Café both have wheelchair access
- Silky Oak Lodge – One wheelchair accessible suite. Treehouse restaurant is wheelchair friendly with a removable ramp to assist access to the lower tiers overlooking the Mossman River.
- Wildlife Habitat is wheelchair friendly.

Accommodation

There are 100 different accommodation options in the Daintree region. Ranging from treehouses overlooking the rainforest canopies, some with glimpses of the Coral Sea, through to beach side cottages or campsites, dorms and resorts with wonderful restaurants and bars.

A detailed listing for each property on following pages with location, number of beds, and features.

Absolute Beachfront Bliss
 Alkira Resort House
 Beachfront House - Wonga
 Beauty Spot Valley Organic Farm Stay
 Butterfly Bend
 Cape Trib Beach House
 Cape Trib Fruit Farm
 Cape Tribulation Camping
 Cape Tribulation Getaway
 Cape Tribulation Holiday House
 Cape Tribulation Sanctuary
 Cassowary Blue
 Cassowary Falls
 Cloud 9
 Coconut Beach House
 Cockatoo Hill Retreat
 Coral Sea Views
 Cow Bay Hilltop Escape
 Cow Bay Homestay
 Creeks Edge Park
 Crocodylus
 Daintree Cascades
 Daintree Beach Resort
 Daintree Eco Lodge and Spa
 Daintree Firefly Cabin and Camping
 Daintree Holiday Accommodation
 Daintree Holiday Home – La Vista
 Daintree Holiday Home – The Folly
 Daintree Holiday Home - Yurara
 Daintree Lighthouse View
 Daintree Magic
 Daintree Manor
 Daintree Ocean View
 Daintree Peaks Eco Stays
 Daintree Rainforest Village
 Daintree Riverside
 Daintree Riverview Lodge and Van Park
 Daintree Seascapes
 Daintree Secrets
 Daintree Siesta
 Daintree Valley Cottage
 Daintree Village Park View
 Daintree Wild B&B
 Daintree Wilderness Camp
 Daintree Wilderness Lodge

Deep Forest Lodge
 Demi View Motel
 Driftwood on Wonga
 Ebenezer Cottage
 Eden Escape
 Fairy Falls
 Ferntree Rainforest Lodge
 Gateway to Cassowary Falls
 Gunnadoo
 Ferntree Rainforest Lodge
 Heritage Lodge
 Jabiru Lodge Daintree Village
 Jabiru Stay Daintree Village
 Jalun Bayun | The Sea House
 Kenadon Brahman Bull Stud Farm
 Manta Ray Bed and Breakfast
 Miallo Creek Stay
 Miallo Lakehouse
 Mist at Cape Tribulation
 Mossman Exchange & Backpacker Resort
 Mossman Golf Club RV Park
 Mossman Resort Holiday Villas
 Newell Beach Caravan Park
 Newell Sunrise
 Noah Beach Camping - QPWS
 Noah Creek Forest Stay Eco Huts
 Pearl on Newell
 Plantation Charm
 Premi Shanti Yoga Retreat
 Rainforest Hideaway
 Reef Cottage
 Renewell
 Safari Lodge
 Shangri-la Whyanbeel
 Silky Oaks Lodge
 Snapper Island Camping – QPWS
 Seaview Studio
 Stonewood Views
 Tati Farm
 Tea Tree Cottage
 The Barn
 The Beach House at Wonga
 The Beach Villa on Newell
 The Botanical Ark
 The Edge
 The Epiphyte
 Treeverb Beach House
 Thornton Beach Bungalows

Wait a While Eco Retreat
 Whyanbeel Valley Retreat
 Wildwood Cape Trib
 Wompoo Eco Retreat
 Wonga Beach Caravan Park
 Wonga Belle
 Yindilli Camp

Daintree Accommodation

Listed from south to north.

Use Button to Jump To Location:

[China Camp](#)
[Cape Kimberley](#)
[Cape Tribulation](#)
[Cow Bay](#)
[Daintree Village](#)
[Diwan](#)
[Forest Creek](#)
[Miallo](#)
[Newell Beach](#)
[Rocky Point](#)
[Thornton Beach](#)
[Whyanbeel](#)
[Wonga Beach](#)

Mossman and North Mossman

Name	Contact	Accom type	Features	Other Details
Creeks Edge Park O'Donoghue Road, Mossman	Info@creeksedgepark.com.au 0402 606 570	Powered and unpowered caravan and camping sites. Can accommodate RVs, caravans of most sizes and tents.	<ul style="list-style-type: none"> Two camping on cattle farm. Both areas offer toilet and shower facilities Four powered sites are next to a beautiful creek – perfect for swimming. The other area can fit 4-6 campers, no power at this second area. Fire pit and wood available \$15/bag Sealed road all the way 	On site management.
Demi View Motel	4098 1277 info@demiview.com.au 41 Front Street, Mossman	Motel accommodation with multiple room configurations.	<ul style="list-style-type: none"> Easy walking distance to restaurants, cafes, supermarket and Club Mossman Saltwater swimming pool / Free WiFi / Communal kitchen & BBQ Air conditioned 	On-site management Reception Hours 7am - 7pm Check-out 10am Check-in 2pm
Mossman Exchange Backpacker Resort	0478 525 4872 mossmanexchange@gmail.com Front Street, Mossman	Single & double rooms for long stays. 6 bed and 3 bed dorms for short stays.	<ul style="list-style-type: none"> Swimming pool Cinema & TV Room Games room – table tennis & pool Communal kitchen with oven, cooktop 	On site management
Mossman Resort Holiday Villas	Mossman Resort Holiday Villas	Motel accommodation Rooms sleep 2, 3, 4, 5 & 6 guests	<ul style="list-style-type: none"> Air conditioning; work space Ironing facilities Refrigerator; kettle; Microwave; Toaster Swimming pool 	On site management 7:30am to 6pm

Mossman and North Mossman

Name	Contact	Accom type	Features	Other Details
Silky Oaks Lodge	4098 1666 423 Finlayvale Road, Finlayvale	Forty treehouse-style suites featuring king beds, ensuite bathroom and balcony with hammock	<ul style="list-style-type: none"> Full gourmet breakfast, signature evening drinks and snacks, dinner with daily changing menu and matched premium wines included; In-suite bar Complimentary Wi-Fi Self-guided walks, river explorations, morning yoga & e-bikes, kayaks and gymnasium 	<p>Reception Hours 6.30am – 10.00pm</p> <p>Check-In Time 2.00pm Check-Out Time 10.30am</p> <p>Minimum 2 Night Stay</p>

Newell Beach

Name	Contact	Accom type	Features	Min stay
Absolute Beachfront Bliss	4098 1418 info@executiveretreats.com.au	Four bedroom holiday home Sleeps 8	Two-storey house is set on 1012m ² of absolute beachfront. Large, fully fenced garden by the beach with saltwater swimming pool.	5 night minimum stay
Coco Beach Villa – Tropical Beachfront Haven	Stayz	Three bedroom holiday home With King Bed which can be configured at two singles. Sleeps 6	Sliding doors at either end allow the sea breeze and sunshine to flow through. The living area and master bedroom have glorious coral sea views. The bedrooms are air-conditioned. Gourmet kitchen has large island bench and European appliances including a coffee machine. Large open plan living area with TV, DVD and games cupboard, free WIFI. Alfresco dining area with BBQ overlooking the swimming pool.	3 night minimum stay
Diamond by the Sea	Air BnB	Four bedroom holiday home Sleeps 8	Two-storey luxury beachfront villa with swimming pool. Firepit, sun beds, with gorgeous desk for alfresco dining. Air conditioned.	5 night minimum stay
Frangipani Beach House	Air BnB	Three bedroom holiday home Sleeps 6	Heated swimming pool for ultimate winter holiday. Private courtyard separates two pavillions.	5 night minimum stay

Newell Beach

Name	Contact	Accom type	Features	Min stay
Jalun Bayun I The Sea House	info@executiveretreats.com.au	Three bedroom holiday home Sleeps 6	Newly refurbished, large outdoor deck, air conditioned bedrooms. Modern kitchen appliances, beautifully furnished and decorated with artwork by local artists.	5 night minimum stay
Manta Ray Bed and Breakfast	0411 473 185 info@mantaray.com.au 23 Coulthard Close, Newell Beach	Two guest rooms: Each with Queen beds Sleeps 4	Set a tropical Bali style garden compound. Rooms are in a guest pavilion on the other side of the main house, separated by a large saltwater pool. Both rooms are airconditioned, have a bar fridge, TV/DVD/CD player with separate entrances to a wide veranda overlooking the pool.	
Mossman Golf Club RV Park	0455 216 520 mossmanrvpark@gmail.com	24 sites for fully self-contained RVs	Views over the 10th & 4 th holes. Clubhouse open daily with shower & toilet facilities.	No minimum stay
Mystique	4098 1418 info@executiveretreats.com.au	Four bedroom holiday home Sleeps 4	Uninterrupted sweeping panoramic views. Resort style heated wet-edge pool with in-pool bench seat. Italian cross-cut travertine marble floors throughout. Outdoor granite kitchen with 5 burner Gas BBQ. Gourmet kitchen with Miele & Bosch appliances & Nespresso machine	5 night minimum stay
Newell Beach Caravan Park	4098 1331 info@newellbeachcaravanpark.com.au 44 Marine Parade, Newell Beach	5 fully self-contained air-conditioned units with linen provided.	30 shaded powered sites, most having a concrete block. 1 Overnight Van, salt-water swimming pool, communal BBQ area with TV, free book exchange and a modern amenities block with laundry.	No minimum stay
Newell Sunrise	4098 1418 info@executiveretreats.com.au	Two bedroom apartment Sleeps 4	Seaside two-bedroom, two-storey apartment offering downstairs kitchen, living and dining area with two bedrooms on the second floor, allowing ample space for relaxation and entertainment.	3 night minimum stay
Pearl on Newell	4098 1418 info@executiveretreats.com.au	Four bedroom holiday home Sleeps 8	Set on 1,100 square metres of absolute beach front, beautifully appointed, inside dining for 10 and two outdoor dining each for 8 people.	5 night minimum stay

Newell Beach

Name	Contact	Accom type	Features	Min stay
Plantation Charm	4098 1418 info@executiveretreats.com.au	Four bedroom holiday home Sleeps 6	Two bathrooms, one with bath. Gourmet kitchen, dishwasher and Nespresso machine plus second kitchen downstairs. Fully air conditioned and ceiling fans	5 night minimum stay
Renewell	4098 1418 info@executiveretreats.com.au	Four bedroom holiday home Sleeps 8	One of the newest holiday homes at Newell and is located on absolute beachfront. Architecturally designed with two kitchens – one poolside with gas BBQ.	5 night minimum stay
Seaview Studio	4098 1418 info@executiveretreats.com.au	One bedroom studio Sleeps 2	King bed, kitchenette, laundry facilities Pull-out Sofabed Private balcony off bedroom with Coral Sea views.	3 night minimum stay
The Beach Villa on Newell Beach	4098 1418 info@executiveretreats.com.au	3 bedroom holiday home. Sleeps 6	Stainless steel gourmet kitchen, fully air conditioned, heated wet-edge saltwater swimming pool.	5 night minimum stay
The Edge	4098 1418 info@executiveretreats.com.au	4 bedroom holiday home. Sleeps 9	Tennis court, swimming pool, master bedroom with views to the ocean. Timber deck wraps around the front of the house.	5 night minimum stay



↑ Whyanbeel

Name	Contact	Accom type	Features	Min stay
Shangri-La Whyanbeel	0407 966 038 52 Kingfisher Lane, Whyanbeel	4-bedroom home sleeps 8 people	16 m swimming pool; 29-acre property Amazing mountain views; gourmet kitchen, large bathtubs & 3 bathrooms	5 nights
The Botanical Ark	4098 8174 info@botanicalark.com Whyanbeel Road, Whyanbeel	4-bedroom home sleeps 8 people	Gourmet kitchen with walk in pantry, Freshwater swimming hole with sandy beach.	3 nights
Whyanbeel Valley Retreat	0409 097 943 Whyanbeelvalleyretreat@gmail.com 16 Robin Close, Whyanbeel	4-bedroom home sleeps 8 people	6.5 acre property Fresh water creek	3 nights

↑ Miallo

Name	Contact	Accom type	Features
Miallo Creek Stay	River Paddock Farm - Hipcamp in Mossman, Queensland	6 sites RV	Beautiful grass paddock surrounded by stunning clear waters in creek which runs all year round. In the evening enjoy a campfire under the stars and spectacular sunsets over the mountains. The surrounding paddocks have horses, cattle, and buffalo. Pets allowed on leash.
Miallo Lakehouse	Miallo Lakehouse Hipcamp - Hipcamp in Mossman, Queensland	5 sites RV – max 6 guests per site.	Private farm with sites along a beautiful rainforest stream perfect for swimming and relaxing. Pets allowed on leash. No toilet – guests need to BYO.
Tati Farm	Booking via Hip Camp	RV Camping – all campers must be self-contained and leave no trace, however there is one toilet and one shower on-site.	25 sites on private cattle farm located at the end of a road with no through traffic. Sites are among exotic fruit trees and large lawns. A paradise for birdwatchers. Creek on the property with stunning mountain views and waterfalls. Enjoy a campfire or sit back and enjoy the native wildlife and cattle grazing. Firewood available \$15/bag

Rocky Point

Name	Contact	Accom type	Features	Details
Gunnadoo	0499 742 749 info@gunnadooholiday.com.au 1387 Mossman Daintree Road, Rocky Point	1 Bedroom villa Sleeps 2	Ocean views	Check in 2pm Check out 10am
Port Douglas Ocean Views	0409 987 064 pdoceanview@gmail.com 1131 Mossman Daintree Road, Rocky Point	3 sites available.	No toilet or shower facilities – self contained only. Pets welcome, must be on leash. Breathtaking views over working cattle farm and the majestic ocean views surrounded by mountains beyond.	

Wonga Beach

Name	Contact	Accom type	Features	Min stay	Check in/out
Beachfront House	info@beachfrontholidayhouse.net 0437 514 949	5-bedroom home sleeps 10 comfortably, has 2 bathrooms and 3 separate sitting areas.	Situated on the Esplanade, just a short distance from Wonga Beach. Outside is a private entertaining area, BBQ & salt water pool. Open plan lounge dining area has ocean views and a clear view of the pool area.		
Daintree Beach Resort	info@daintreebeachresort.com.au 4099 9600 113 Vixies Road, Wonga Beach	Luxury glamping.	Food & Beverage Van. Opening hours vary during the season 6th March - 28th May - Thursday to Monday - 4pm to 8pm Closed Tuesday & Wednesday 29th May - 28th September - Everyday - Breakfast/light lunch 7am to 2pm and dinner from 4pm - 8pm October - TBA For groups larger than 10, please call us on 07 4099 9600 to reserve a table.		
Daintree Wild B&B	4098 7272 www.daintreewild.com.au	Rooms for 2, 3, or 4 guests Aviary Rooms all have high ceilings, king beds.	Poolside rooms suitable for families. All rooms come with continental breakfast.	Check in 2pm	Check out 10am
Driftwood On Wonga	1 Bells Reef Close, Wonga Beach	10 guests in five bedrooms	Spacious beachfront holiday home		

Wonga Beach

Name	Contact	Accom type	Features	Min stay Check in/out
Reef Cottage	0409 518 255 70 Marlin Drive, Wonga Beach	Holiday house for up to 4 guests in 2 bedrooms	Air con., close to beach, deep plunge pool	Min 5-night stay
The Beach House at Wonga	0407 966 038 10 Kadan Close info@executiveretreats.com.au	4-bedroom holiday house 2 King beds and 4 singles Sleeps 8		Min 5-night stay Check in 2pm Check out 10am
Wonga Beach Caravan Park	0437 937 991 wongacaravanpark@gmail.com	Powered sites only	Beachfront sites when available, laundry and happy hour every Friday from 4pm where guests BYO drinks and nibbles and share travel stories.	
Wonga Belle	0402 239 660 hello@wongabelle.com.au 6 Camelia Close	4-bedroom home with 3 bathrooms. Sleeps 10	Set on a private, manicured 1/4 acre plot with ocean views. Luxury Beachfront Home with heated saltwater pool. Table Tennis, Darts, PS4 and more. Pet friendly.	3 Night minimum stay with 2pm Check in and 10am Check out.

Daintree Village

Name	Contact	Accom type	Features
Beauty Spot	Beauty Spot Valley Organic Farmstay - Hipcamp in Daintree, Queensland	5 sites; RV, Tent	Just 10 minutes from Daintree Village, peaceful rainforest retreat set among fruit orchards & a clear freshwater creek, bordering the Daintree national park with lush walking trails. Pet friendly. Croc-free swimming holes and a scenic trail to Beauty Spot Falls — our private waterfall and swimming spot.
Cloud 9	0437 632 137 info@daintreecloud9.com 3217 Mossman Daintree Road, Daintree	Holiday house; sleeps 6 in three bedrooms	Timber features, 6 metre ceiling, well equipped kitchen and 18 metre viewing deck. Sunbathing terrace, complete with reclining chairs and al fresco shower. Free introductory 2 hour lesson in woodturning by prior arrangement.
Daintree Eco Lodge and Spa	4098 6100 reservations@daintree-ecolodge.com.au 3189 Mossman Daintree Road, Daintree	Unique, luxury accommodation in tree houses	Range of breakfast options Guided walks Al fresco dining breakfast and dinner

Daintree Village

Name	Contact	Accom type	Features
Daintree Riverfalls	0417 203 991 stay@daintreeriverfalls.com 893 Upper Daintree Road, Upper Daintree	5 bedroom holiday home which sleeps 10 Eco Tent sleeps 2	Blissfully relaxed, secluded holiday lodge set on 450 acres. Walking trails, rainforest swimming holes all on private property.
Daintree Riverview Lodges & Van Park	0409 627 434 2 Stewart Street, Daintree Village info@daintreeriverview.com	Camping, caravans, ensuite rooms in lodge	Awesome River views Communal area with sink, BBQ and veranda Laundry facilities available
Daintree Village Park View	0488 907 776 dave@daintreefishing.com.au	Holiday home sleeps 10 guests.	2 self-contained cabins joined by spacious covered deck. Located in heart of Daintree Village
Egrets Rest	Egrets Rest 0427994388 22 Dagmar St, Daintree Village Kathsmith2468@gmail.com	Holiday house sleeps 6 2 bedrooms	Egrets Rest is a 5 minute walk to the Daintree Hotel, and Daintree River where there are hourly nature cruises, or a choice of sunset and/or sunrise bird watching cruises. The house is an 8 minute drive to Daintree Ferry and Daintree National Park.
Gateway to Cassowary Falls	0481 988 307 263 Upper Daintree Road, Upper Daintree. info@cassowaryfalls.com.au	Two chalets each sleep two adults.	Private spa; dual rainwater shower heads, large retractable television screen, adjustable dual king size bed with zero gravity setting for blissful sleep.
Jabiru Lodge Daintree Village	0429 431 339 Upper Daintree Road, Daintree Village Jabiru Lodge - Airbnb	Entire cottage – sleeps 2 guests	Awesome views. Fully self contained, air conditioned & swimming pool. Set on 350 acres with access to walking tracks through the rainforest.
Jabiru Stay Daintree Village	0429 431 339 7 Stewart Street Daintree Village	Holiday house; sleeps 6; 3 bedrooms and 3 bathrooms	In the main street of Daintree Village, with convenient access to tour desk, coffee shop, pub, walking track, and boat ramp. Air-conditioned, large swimming pool with a spa bath and has been recently fully refurbished.
Kenadon Brahman Bull Stud Farm	Bookings on Hipcamp	RV camp - all guests will have to be self-contained	Located on 400 acres in the village of Daintree, 300 metres from the village centre with public amenities, café, hotel/restaurant, river cruises, fishing trips and boat ramp. Pets on a leash welcome.

↑ Forest Creek

Name	Contact	Accom type	Features	Min stay	Check in/out
Daintree Manor B&B	122 Forest Creek Road, Forest Creek 0458 160 872 daintreemanor@outlook.com	3 rooms: two doubles one twin share room; private ensuite	Panoramic views of surrounding mountain ranges and the Daintree valley		Check in 2pm Check out 10am
Daintree Valley Cottage	113 George Road, Forest Creek Airbnb or Booking.com	One-bedroom cottage Sleep 2,	Offering outstanding views of 3 mountain ranges, and 12 layers of the Daintree Valley. Set on five acres of land giving the ultimate privacy. Hot tub; fully equipped kitchen		3 night minimum.

↑ Cape Kimberley

Name	Contact	Accom type	Features
Baku Beach House	493 Cape Kimberley Road, Cape Kimberley	Holiday home 2 bedrooms Sleeps 4	1 queen bed; 2 twin beds; Direct beachfront access with stunning views. Guests can relax by the swimming pool or sun terrace, enjoy the lush garden, and take advantage of the open-air bath. Amenities include air-conditioning, fully equipped kitchen, and free WiFi throughout the property. Outdoor fireplace, fitness room, indoor and outdoor play areas, and a games room.

↑ Snapper Island

Snapper Island lies one nautical mile south-east of Cape Kimberley at the mouth of the Daintree River. It has beautiful fringing reef amazing views of the Daintree Coast a cave and seasonal waterfall and lots of coral shingle private secluded beaches.

Camping is permitted on the island and there are four unnumbered camp sites. Permits must be obtained in advance and fees do apply. To book the Camping grounds <https://parks.des.qld.gov.au/parks/hope-snapper/camping/snapper-island>

If you do not have your own transport to Snapper Island, accessible only by boat, WindSwell offers high speed boat transfers Ex Port Douglas to and from Snapper Island and then drop offs along the Daintree coast to your chosen accommodation or tour company.

Call Brett on 0427 498 042 or emailing windswellkitesurfing@gmail.com to book your transfers.



Cow Bay

Name	Contact	Accom type	Features
Bowenia Daintree Rainforest Retreat	1473 Cape Tribulation Road, Cow Bay Bookings via Stayz	House – 2 bedrooms Sleeps 7	Large open living area and covered decking surrounded by rainforest. Deck overlooks extensive tropical gardens, and floor to ceiling bifold doors open the living room to the deck to combine your indoor and outdoor living experiences. Indoor dining table seats six, or you can enjoy your meal alfresco on the deck which also has a dining table and easy chairs. New custom built kitchen is fully equipped with gas cook top and oven, full size fridge/freezer.
Butterfly Bend	254 Buchanan Creek Road, Cow Bay	3 Bedroom two- bathroom holiday home. Sleeps 6.	Direct beachfront access with a private beach area. Guests can relax on the terrace or balcony, enjoying garden views and the sound of the waves. The home provides ample space for a comfortable stay. The living room includes a work desk and streaming services, ensuring entertainment options are available.
Cassowary Blue	Airbnb	2 Bedroom house which sleeps 4	The property has its own small, private waterhole. It is on a quiet dead end road having cleared areas around the house and walking tracks surrounded by conservation protected, untouched rainforest and creek. Veranda and another outdoor seating area on the banks of the creek.
Cow Bay Hilltop Escape	246 White Beech Road, Cow Bay 07 4242 1012 stay@hilltopescape.com	3-bedroom holiday home + 1 bedroom pavilion (sleeps 7)	Fully equipped house nestled on a hillside with no nearby neighbours, with large deck overlooking the trees and with glorious views of the Coral Sea.
Daintree Holiday Accommodation	Book via Airbnb, VRBO, or Booking.com 59 Quandong Road, Cow Bay	Holiday home, 2 bedrooms, 2 queen beds Sleeps 4	Private fully equipped home, the perfect base for exploring the area.
Daintree Holiday Homes – La Vista	0459 363 638 info@daintreeholidayhomes.com 6 Buchanan Creek Road, Cow Bay	Private holiday home 3 beds and 2 bathrooms Sleeps 6	Pool deck, hammocks and alfresco dining Games room with pool table, darts and a large smart TV. Free 4G Wi-Fi, Foxtel, Prime, Disney Plus and Optus Sport. with Plunge pool, jet spa and panoramic ocean views.

↑ Cow Bay

Name	Contact	Accom type	Features
Daintree Holiday Homes - Yurara	64 Black Bean Road, Cow Bay	Private holiday house 3 beds and 1.5 bathrooms Sleeps 6	Ocean views and outdoor spa bath for two. Free 4G Wi-Fi, Foxtel, Prime, Disney Plus and Optus Sport.
Daintree Oceanview	0422 138 371 23 Kauri Close, Cow Bay	Holiday home – 4 bedrooms. Up to 8 people.	Spectacular ocean view, 10 minute stroll to the beach.
Daintree Crocodylus	0402 735 124 161 Buchanan Creek Road, Cow Bay Daintree.crocodylus@gmail.com	Safari style cabins with ensuite, 4 bed dorms Safari-Style Living Designed to maximize "eco-pleasure" without sacrificing essential comfort, the accommodation is tucked deep within 21 acres of private rainforest. The wooden and canvas bungalows are built in a traditional safari-tent style, featuring high ceilings inviting the natural tropical breezes to circulate, keeping the jungle heat at bay while guests drift off to the sounds of the canopy.	A True Rainforest Immersion at Cow Bay Secluded within the rare lowland canopy of Cow Bay, this retreat offers a front-row seat to the jungle and its prehistoric inhabitants. This isn't just a place to stay; it is a living sanctuary. Monitor lizards, bandicoots, and the iconic Southern Cassowary are regular neighbors, while Boyd's Forest Dragons and orange-footed scrub fowls move through the undergrowth. For nature lovers, it is a rare opportunity to experience the "real" Daintree, where the wildlife doesn't just visit—it lives here. The Ultimate Basecamp Centrally located just north of the Daintree River, it serves as the perfect launchpad for exploring the wonders of the Daintree region. Adventure on Your Own Terms Crocodylus caters to the independent spirit. A fully equipped self-catering kitchen provides everything needed for a jungle feast, from BBQs and gas burners to ample fridge space. For those visiting during the high season (mid-June to the end of August), the onsite Café and Bar provide a social hub for meals and cold drinks.
Daintree Seascapes	0400 473 246 info@daintreeseascapes.com.au 35 Kauri Close, Cow Bay	3 Bedroom Holiday Home Up to 7 guests	Restored timber cottage Sweeping ocean views

Cow Bay

Name	Contact	Accom type	Features
Daintree Wilderness Camp	Daintree Wilderness Camp - Hipcamp in Cow Bay, Queensland	5 sites RV; Tents; max. 4 guests per site.	Pit toilet; composting toilet; campfires allowed. Pets allowed on leash.
Ebenezer Cottage	0418 547 778	Holiday home – 4 guests	Rainforest, private Self-contained
Fairy Falls	58 Maple Road, Cow Bay Booking.com	Two-bedroom house, Sleeps 4.	Spacious, recently with living room featuring. a sofa, parquet floors, and a work desk
The Epiphyte	0435 082 423 info@rainforestbb.com 73 Silkwood Rd, Cow Bay	Four rooms with ensuite and private balconies: <ul style="list-style-type: none"> ▪ 1 Single – sleeps one ▪ 1 Double – sleeps two 2 x Superior Double/ Family – each sleeps three 	Close to beach Views to Thornton Peak 2 cottages with ensuites, kitchens and private balconies.
Treeverb Beach House	16 Penda Close, Cow Bay 0412536612	One bedroom one bathroom villa	Features a fully equipped kitchen and amenities - fridge, oven and stovetop.
Wait-a-While Eco Retreat	0419 242 546 greg@waitawhilecoretreat.com.au 445 Buchanan Creek Road, Cow Bay	Holiday Home 2 king beds 1 queen 2 singles Multiple indoor and outdoor areas. Up to 9 guests.	Nestled in the rainforest Private Mineral swimming pool Fully equipped kitchen Pool table games High Speed Wi-Fi Easy stroll to the beach
Wompoo Eco Retreat	0411 146 082 0432 999 966 info@wompooecoretreat.com.au 22 Buchanan Creek Road, Cow Bay	Two private bungalows King size beds. Ideal for couples and solo travellers. Not suitable for children under 15.	Bathroom includes a toilet, rain shower and a vanity unit with a view of Thornton Peak and mountain ranges. Private hand-crafted outdoor hot tub. Handmade soaps and bath salts are complimentary. Continental breakfast with a strong element of local and regional fruits, coffee, teas, muesli, bread, jam, honey. Limited free wi-fi access from the bungalow.



Diwan

Name	Contact	Accom type	Features	Min stay
Blue Q Rainforest Retreat	Air Bnb 194 Carbeen Road, Diwan 0410 666 549	Two bedroom holiday home 6 guests	Set at the end of a no-through road, this 2 ½ acre property is very private. It has a full kitchen, washing machine, open-plan living, and a spacious deck surrounded by lush tropical forest. Relax by the pool, or unwind in the air-conditioned living room.	
Cockatoo Hill Retreat	4098 9277 2060 Cape Tribulation Road, Diwan info@cockatoohillretreat.com.au	4 treehouses King beds & ensuite	Luxury accommodation on top of hill with sea views Swimming pool	Check in 2pm Check out 10am
Coral Sea Views	4098 9058 coralseaviews@conxx.com 74 Mahogany Road, Diwan	Two private chalets with ensuites	Swimming pool, elevated with views, private balconies	Min stay 2 nights
Daintree Cascades	0437 059 908 james@daintreecascades.com.au 202 Stonewood Road, Diwan	Round house – 4 guests Cottage – 2 guests	Round house and cottage.	Off site management Check in 2pm Check out 10am
Daintree Holiday Homes – The Folly	info@daintreeholidayhomes.com Dean: 0459 363 638	Private holiday home 2 beds and 1 bathroom Sleeps 3	Free 4G Wi-Fi, Foxtel, Prime, Disney Plus and Optus Sport. Beautiful gardens and valley views.	Check in 2pm Check out 10am Min Stay 2 nights
Daintree Peaks Eco Stay	4098 9002 daintreeecobnb@gmail.com 22 Ironbark Road, Diwan	Four cabins, each with a queen bed (or 2x king singles) private bathroom and lounge. One cabin is wheelchair accessible, with roll in shower & shower chair.	Air conditioning, ceiling fans, and kitchenette. Breakfast included in room rate Licenced cafe 10am – 8pm, Menu changes frequently to use locally harvested produce. Lap pool. No children under 12	On site management 6:00am – Midnight 7 days a week

↑ Diwan

Name	Contact	Accom type	Features	Min stay
Daintree Rainforest Village	0466 658 399 stay@daintreerainforestvillage.com.au 2094 Cape Tribulation Road, Diwan	Grassy campground, camp kitchen, laundry, awesome bathrooms, communal fire circle. Powered, unpowered and sheltered sites.	Tropical grounds in the rainforest with mountain views. Last fuel, grocery and souvenir store, Postal agent, ATM, public phone, gas, ice, bait.	On site management Open 7am to 6pm seven days per week (Except Christmas Day) Check in 1pm Check out 10:30am Book Here
Daintree Secrets	0409 792 922 info@daintreesecrets.com.au 61 Stonewood Road, Diwan	3 bedroom holiday home Sleeps 7 guests	Fully self-contained home – full kitchen, washing machine, veranda overlooking year round a running stream in the rainforest. This secluded property boasts its own deep, natural swimming hole and waterfalls with a shallow pool for the little ones. No crocodiles. Perfect for families, a group of friends or a romantic getaway for couples.	Off site management Min stay is 3 nights Check in 3pm Check out 10am



 **Diwan**

Name	Contact	Accom type	Features	Min stay
Daintree Siesta	4098 9155 1973 Cape Tribulation Road, Diwan, Kaba Kada – Daintree Rainforest, QLD 4873 welcome@daintreesiesta.com.au	Air-conditioned lodge-style rooms with ceiling fans (queen, twin & family rooms up to 5 guests, one accessible) Rainforest campground with powered & unpowered sites (33 sites)	Relaxed rainforest setting in the heart of the Daintree Rainforest with rooms & sites set around a rainforest loop, offering space, privacy and a laid-back experience. Rooms have satellite TV, tea and coffee making facilities, and small fridge. Private rainforest walking tracks, rainforest 'Float' pool, camp kitchen, laundry and bathrooms, plus book exchange, games and DVDs for guest use. Guided Rainforest Connections Walks available (see separate listing). Licensed restaurant open Sunday to Friday for lunch and dinner. Well suited to self-drive travellers, families and groups, with options for those who prefer camping or more comfort. Proudly accredited by Ecotourism Australia.	2-night minimum stay for rooms during peak season. Online bookings preferred: Book Here
Daintree Wilderness Lodge	4098 9105 reservations@daintreewildernesslodge. com.au 1780 Cape Tribulation Road, Diwan	Resort with seven cabins with ensuite & air-con	In the rainforest Refreshing spa Licensed restaurant and bar DVD Library; free Wi-Fi in common area Nature walk leading to rainforest creek	On site management No Minimum Stay Check in 2pm Check out 10am
Deep Forest Lodge	0411 341 904 2159 Cape Tribulation Road, Diwan deepforestlodge@gmail.com	2 studio apartments (each sleep 3) 1 bedroom apartment (2+3 or 3+2) family oriented	Immersed in the rainforest Apartments equipped for personal cooking and dining Internet free in apartments Enjoy nature from a private patio setting	Check in 2pm Check out 10am



Diwan

Name	Contact	Accom type	Features	Min stay
Eden Escape	121 Ironbark Road, Diwan	One bedroom villa Sleeps 2	Villa with a garden, terrace, and open-air bath. Guests enjoy free WiFi, sea views, and a balcony.	Check in 2pm Check out 10am
Heritage Lodge	4098 9321 reservations@heritagelodge.net.au 96 Turpentine Road, Diwan	22 Rainforest cabins with ensuite	Licensed restaurant & bar Swimming pool Guests can enjoy swimming in the clear, pristine water of Cooper Creek which winds through the lodge en-route from the mountains to the sea, or soak up some sun beside our sparkling swimming pool.	Check in 2pm Check out 10am
Prema Shanti Yoga Retreat	4098 9006 183 Turpentine Road, Diwan	Boutique with shared bathroom or deluxe	Rejuvenate mind, body & soul	Check in 2pm Check out 10am
Stonewood Views	0419 836 097 193 Stonewood Road, Diwan Views.holiday@gmail.com	Holiday home – fully self-contained. 3 Bedrooms, 2 Bathrooms Sleeps 10	Modern two storey home, timber deck, ocean and mountain views, creek. Upstairs is open plan living area which leads out onto the deck with dining table and BBQ. Full kitchen with concrete bench/breakfast bar.	Check in at 2 pm Check out 10 am
Tea Tree Cottage	0437 428 906 64 Tea Tree Road, Diwan karenken2010@gmail.com	Holiday Home Pole house. Sleeps 5 people	Nestled on 3 acres in the foothills of the majestic Thornton Peak	Off site management Min 4-night stay

↑ Thornton Beach

Name	Contact	Accom type	Features	Office hours - Min stay
Thornton Beach Bungalows	0481 699 120 stay@thorntonbeach.com.au 2593 Cape Tribulation Road, Thornton Beach	<ul style="list-style-type: none"> Two queen ensuite bungalows that sleep 2 Holiday house sleeps 6 	Ocean views, tropical gardens, private balconies, BBQ facilities, directly opposite pristine Thornton Beach	No min night stay in ensuite cabins Two-night min. stay in the house
Noah Creek Forest Stay Eco - Huts	3017 Cape Tribulation Road, Thornton Beach 40989297 reservations@noahcreek.com.au	Two Eco style houses situated in the heart of the Rainforest; each house sleeps up to 8 people. The Ridge House The Lodge House Plus The Bower & The Ochre glamping huts; which each sleep 2 people.	All accommodation offers a fully equipped kitchen and a refrigerator. There is a fireplace and a balcony with picturesque views. The property offers BBQ facilities. Guests have access to self-guided walking trails, waterfalls, waterholes, and can arrange to do guided treks in more mountainous areas.	Onsite management

↑ Cape Tribulation

Name	Contact	Accom type	Features	Min stay
Alkira Resort House	0756 410 108 3726 Cape Tribulation Rd Cape Tribulation enquiries@luxuryholidays.com.au	Whole resort: 6 Bedrooms, each with Queen bed & ensuite. One bedroom has outdoor spa, five have balconies. Sleeps 12	Entirely off-grid and carbon neutral in operation and is powered by renewable energy.	Minimum stay 4 nights.
Cape Trib Beach House	4098 0030 152 Rykers Road, Cape Tribulation reservations@capetribbeach.com.au	Cabins to suit couples, singles and families – all ensuited.	Tides Bar & Restaurant Swimming Pool. Right on the beach.	Office Hours 8am to 4pm Check in 2pm Check out 10am

Cape Tribulation

Name	Contact	Accom type	Features	Min stay
Cape Tribulation Camping	4098 0077 stay@capetribcamping.com.au	Beachfront cabins and camping - Powered and Unpowered sites.	Camp kitchen & BBQ, Licenced Woodfire Pizza Café, firepits and dump point. Direct beach access.	On Site Management
Cape Trib Farm	4098 0042 3939 Cape Tribulation Road, Cape Tribulation info@capetribfarm.com.au	5 private air-conditioned self-contained cottages tucked away in the orchard featuring kitchenette, lounge deck and ensuite, with mountain views. 3 King bed cottages and 2 King + single bed cottages.	Located on 80-acre tropical fruit farm, including 50 acres of forest within Wet Tropics World Heritage Area. Exotic fruit breakfast, homemade jams Sustainability: Off-grid solar power system; regenerative farming practices Use of farmhouse facilities: BBQ and Pizza oven. 5 minutes walk to beach	Min stay 2 nights Check in 2pm Check out 10am
Cape Tribulation Getaway	0474 134 109 stay@capetribulationgetaway.com 9 Nicole Drive, Cape Tribulation	Two bedroom holiday home Sleeps 4	The open plan living and dining area flows into a fully equipped kitchen, perfect for preparing tropical feasts. Expansive shaded decks optimise outdoor living, as does the addition of a BBQ, while the private pool is ideal for cooling off or soaking in the rays on the sundeck. Both two bedrooms take full advantage of the house's spectacular setting	Min stay 2 nights Check in 2pm Check out 10am
Cape Tribulation Sanctuary	capetribulationsanctuary.emma@gmail.com Rykers Road, Cape Tribulation	3 bedroom holiday home Up to 6 guests Book one room, or entire house	High set home with stunning ocean views. Very private	Off site management Min stay 2 nights Check in 2pm Check out 10am

↑ Cape Tribulation

Name	Contact	Accom type	Features	Min stay
Cape Tribulation Holiday House	capetribulationholidayhouse@gmail.com 0401 391 471 77 Camelot Close, Cape Tribulation.	Sleeps six. One queen bedroom downstairs, upstairs loft has queen bed and two singles.	Set on five acres. It is a hand built Yurt design house within walking distance of the beach, supermarket, adventure tours, restaurants & cafes. Art retreats can be arranged; get a group of friends together and we can arrange more accommodation very nearby for larger groups.	
Ferntree Rainforest Lodge	4098 0000 36 Camelot Close, Cape Tribulation bookings@ferntreelodge.com	Cabins and Lofts – all with ensuite	A large resort pool, restaurant and bar.	On Site Management
Mist at Cape Tribulation	0457 087 851 mistatcapetribulation.com.au 94 Nicole Drive, Cape Tribulation	Three pavillions Each Sleeps 2 Total 6 guests	King Size Bed, Pillow menu, 3-seater sofa, dining area, kitchenette with full size fridge, coffee machine, luxury bathroom and large covered outdoor deck all with expansive views of the World Heritage Rainforest.	Minimum stay is two nights
Noah's Camping Ground	137468	Composting toilets No showers and no water	National Park Camping Area on the Beach. Camping permit required. Camping tag with booking number must be displayed at your camp site. Camp sites must be booked and paid for before travelling to the campground.	Open June to December
Safari Lodge	4098 0006 lodge@oceansafari.com.au 3903 Cape Tribulation Road, Cape Trib	King Ensuite with aircon cabins, King/Twin/Triple Cabins with shared bathrooms, powered and unpowered campsites.	Swimming pool, camp kitchen, café, amenities block, onsite manager, laundry. In the heart of Cape Tribulation, 5 mins walk to beach Affordable / Budget rates.	Book here

↑ Cape Tribulation

Name	Contact	Accom type	Features	Min stay
Wildwood	0499 889 993 enquiries@wildwoodcapetrib.com.au 44 Nicole Drive, Cape Tribulation	2x Rainforest cabins great for couples 1x Family home with private swimming pool	Handcrafted home and boutique cabins set on a rare exotic fruit orchard in the heart of Cape Tribulation in the Daintree rainforest.	Cabins 2 night min stay House 3 night min stay Book Here

↑ China Camp (CREB Track)

Name	Contact	Accom type	Features	Details
Yindilli Camping Ground.	4098 6248 yindillicamp@gmail.com	Camping	Two hours north along the CREB, or a one-hour drive south from Wujal. It offers toilet facilities, fireplaces (for cooking etc), dry firewood, walking tracks to Bairds Creek for swimming in crystal clear mountain waters and grassed camp sites.	On Site management

